

DECA® SwitchLab Inc. HC Series Cam Switch

HC10 series

■特點 Special Feature

- 1.層數若需要，最多可添加至12層。
If it need, the number of the steps can be added to 12 Max.
- 2.同一應用，可選用不同安裝方式。
Same application, the different assembly types can be selected.

■一般開關型號說明（接線方式不固定，請務必依實際需求註明代號，或來圖樣確認）

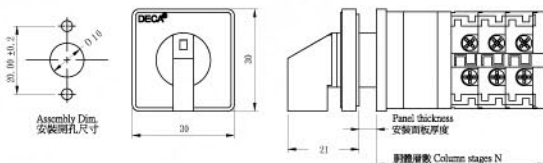
系列	電量A	安裝方式	面板大小	工位代號	接線代號	把手	把手顏色	接線端子
DGE	16	S	4	9GD	212	N	B	A
GE 通用開關	10	C 中心	0-無	首位定位角距	首位工位段數	N 標配型	B 黑	A 內置壓板
MS 多段開關	16	S 螺絲	3-30□	3(30°),4(45°)	1~9,A~C(10~12)	S 短柄型	R 紅	B 外置壓板
CO 轉換開關	25	B 底座	4-48□	6(60°),9(90°)	二位本體層數	L 長柄型		C 內置插板
OF on/off開關	63	R 軌道	6-64□	二位為起始工位 三位為結束工位 請見工位代號說明	1~9,A~C(10~12) 末位為流水號 1~9,A~Z	K 鑰匙型 G 安全型		D 外置插板
參考頁數		P50	P52	P54	P56	P58	P58	P60

Screw mounting

With plate and general handle



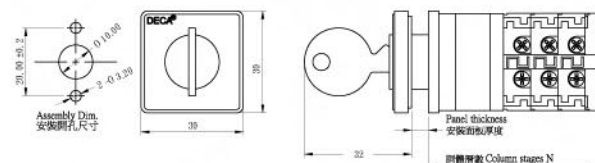
Shape dimension



With plate and key handle



Shape dimension



DECA® SwitchLab Inc.

HC Series Cam Switch

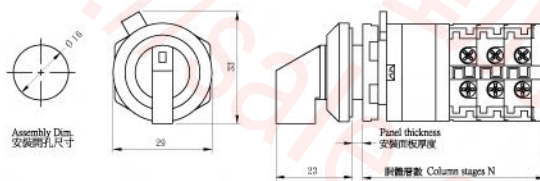
HC10 series

Single hole mounting

Without plate and general handle



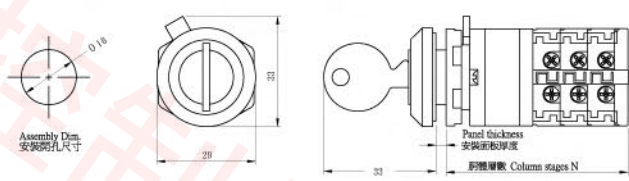
Shape dimension



Without plate and key handle



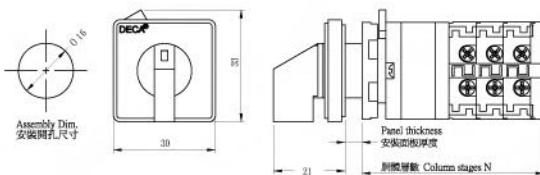
Shape dimension



With plate and general handle



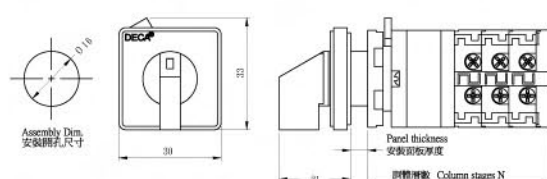
Shape dimension



With plate and key handle



Shape dimension



DECA® SwitchLab Inc. HC Series Cam Switch

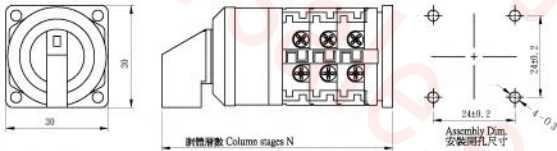
HC10 series

Base mounting

Without plate and general handle



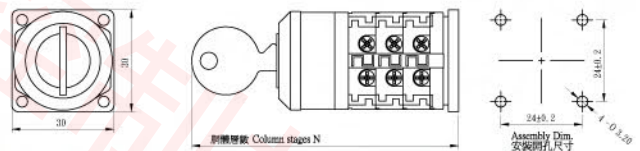
Shape dimension



Without plate and key handle



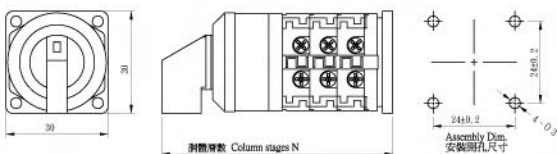
Shape dimension



With plate and general hand



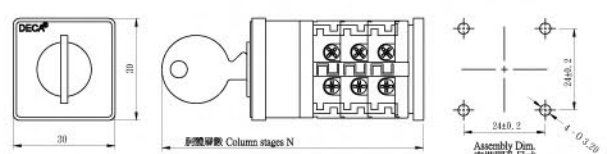
Shape dimension



With plate and key handle



Shape dimension



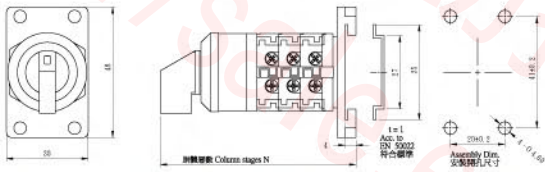
HC10 series base

Rail mounting

Without plate and general handle



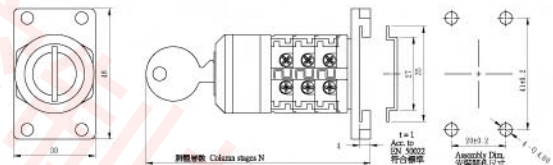
Shape dimension



Without plate and key handle



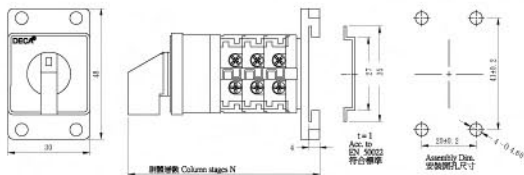
Shape dimension



With plate and general handle



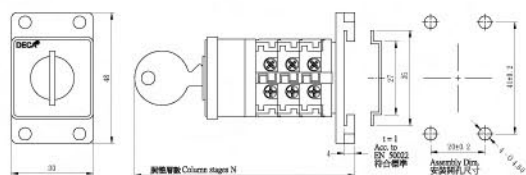
Shape dimension



With plate and key handle



Shape dimension



DECA® SwitchLab Inc. HC Series Cam Switch

HC16 series

■特點 Special

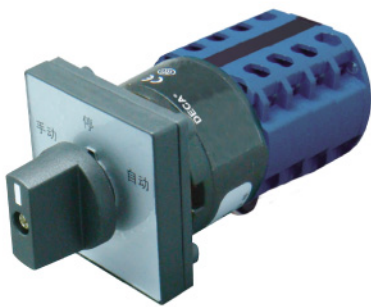
- 層數若需要，最多可添加至12層。
If it need, the number of the steps can be added to 12 Max.
- 同一應用，可選用不同安裝方式。
Same application, the different assembly types can be selected.

■一般開關型號說明（接線方式不固定，請務必依實際需求註明代號，或來圖樣確認）

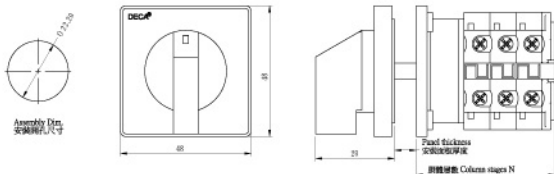
系列	電量A	安裝方式	面板大小	工位代號	接線代號	把手	把手顏色	接線端子
DGE	16	S	4	9GD	212	N	B	A
GE 通用開關	10	C 中心	0-無	首位定位角距	首位工位段數	N 標配型	B 黑	A 內置壓板
MS 多段開關	16	S 螺絲	3-30□	3(30°),4(45°)	1~9,A~C(10~12)	S 短柄型	R 紅	B 外置壓板
CO 轉換開關	25	B 底座	4-48□	6(60°),9(90°)	二位本體層數	L 長柄型		C 內置插板
OF on/off開關	63	R 軌道	6-64□	二位為起始工位 三位為結束工位 請見工位代號說明	1~9,A~C(10~12) 末位為流水號 1~9,A~Z	K 鑰匙型		D 外置插板
參考頁數		P50	P52	P54	P56	P58	P58	P60

🔩 Screw mounting

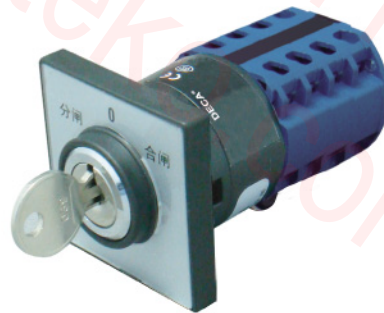
With plate and general handle



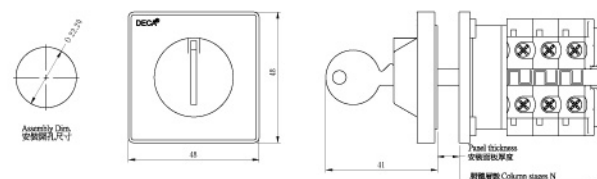
Shape dimension



With plate and key handle



Shape dimension



HC16 series

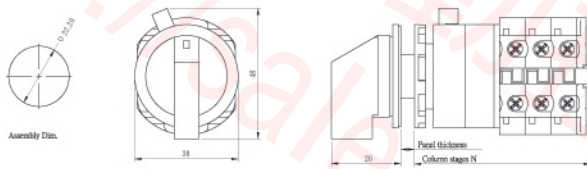
Single hole mounting

Without plate and general handle

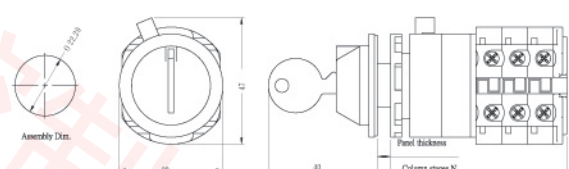
Without plate and key handle



Shape dimension

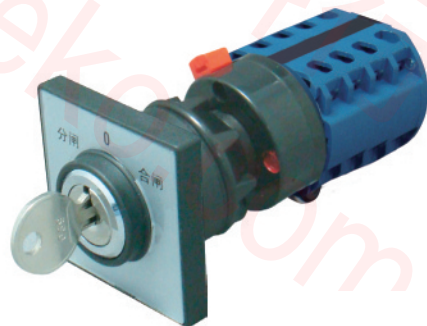
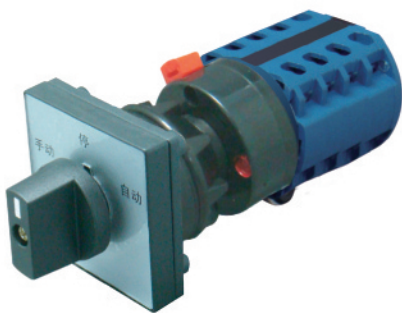


Shape dimension

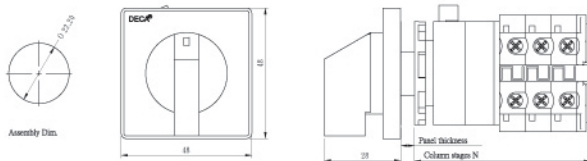


With plate and general handle

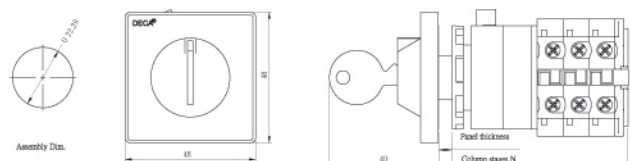
With plate and key handle



Shape dimension



Shape dimension



DECA® SwitchLab Inc. HC Series Cam Switch

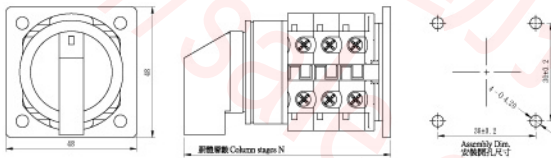
HC16 series

Base mounting

Without plate and general handle



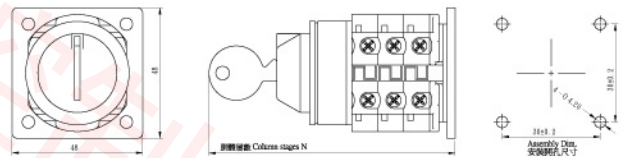
Shape dimension



Without plate and key handle



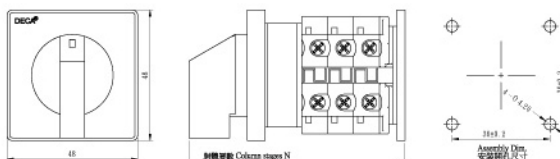
Shape dimension



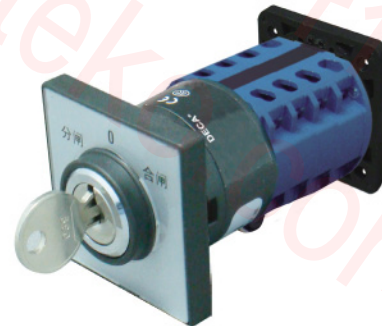
With plate and general handle



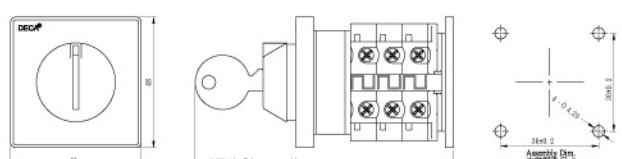
Shape dimension



With plate and key handle



Shape dimension



DECA® SwitchLab Inc. HC Series Cam Switch

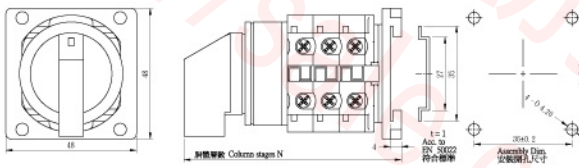
HC16 series base

Rail mounting

Without plate and general handle)



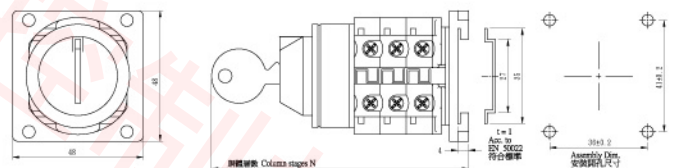
Shape dimension



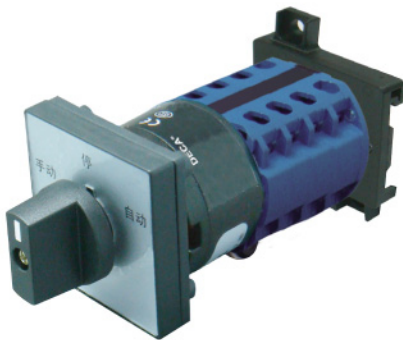
Without plate and key handle)



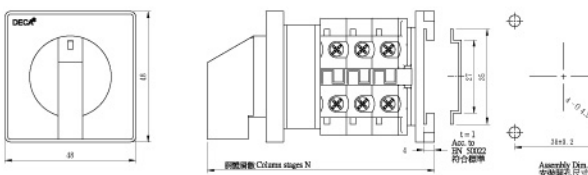
Shape dimension



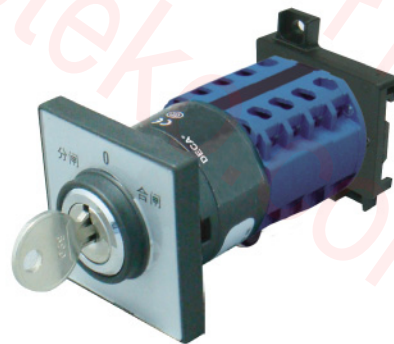
With plate and general handle)



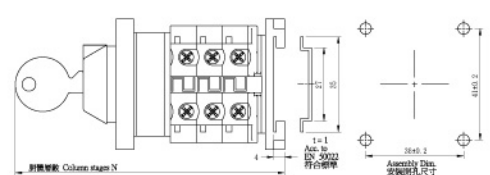
Shape dimension



With plate and key handle)



Shape dimension



DECA® SwitchLab Inc. HC Series Cam Switch

HC 25 series

■特點 Special

- 層數若需要，最多可添加至12層。
If it need, the number of the steps can be added to 12 Max.
- 同一應用，可選用不同安裝方式。
Same application, the different assembly types can be selected.

■一般開關型號說明（接線方式不固定，請務必依實際需求註明代號，或來圖樣確認）

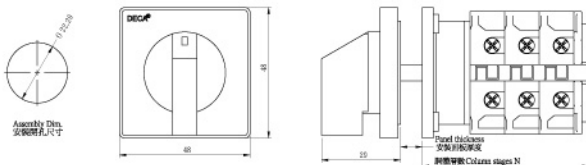
系列	電量A	安裝方式	面板大小	工位代號	接線代號	把手	把手顏色	接線端子
DGE	16	S	4	9GD	212	N	B	A
GE 通用開關	10	C 中心	0-無	首位定位角距	首位工位段數	N 標配型	B 黑	A 內置壓板
MS 多段開關	16	S 螺絲	3-30□	3(30°),4(45°)	1~9,A~C(10~12)	S 短柄型	R 紅	B 外置壓板
CO 轉換開關	25	B 底座	4-48□	6(60°),9(90°)	二位本體層數	L 長柄型		C 內置插板
OF on/off開關	63	R 軌道	6-64□	二位為起始工位 三位為結束工位 請見工位代號說明	1~9,A~C(10~12) 末位為流水號 1~9,A~Z	K 鑰匙型 G 安全型		D 外置插板
參考頁數		P50	P52	P54	P56	P58	P58	P60

🔧 Screw mounting

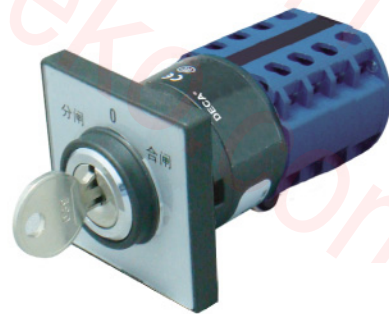
With plate and general handle



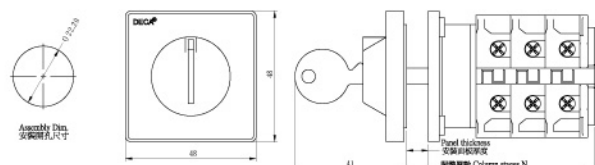
Shape dimension



With plate and key handle



Shape dimension



DECA® SwitchLab Inc.

HC Series Cam Switch

HC series

Single hole mounting

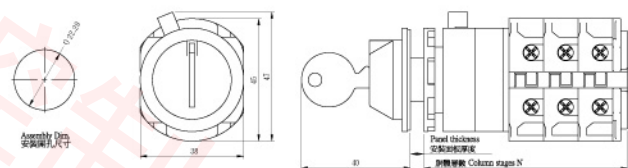
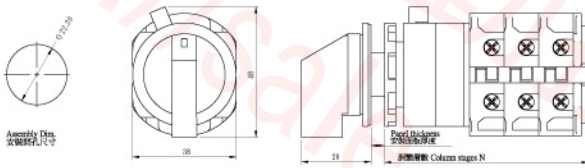
Without plate and general handle

Without plate and key handle



Shape dimension

Shape dimension



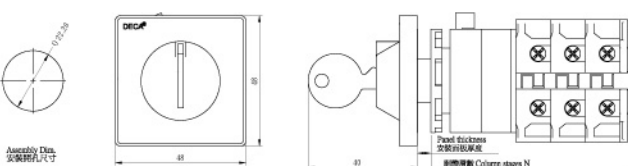
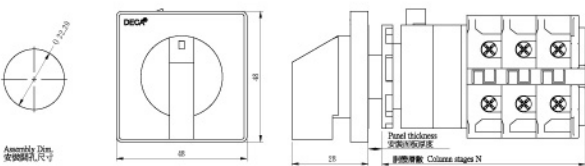
With plate and general handle

With plate and key handle



Shape dimension

Shape dimension



DECA® SwitchLab Inc. HC Series Cam Switch

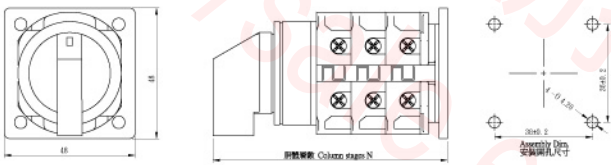
HC 25 series

Base mounting

Without plate and general handle



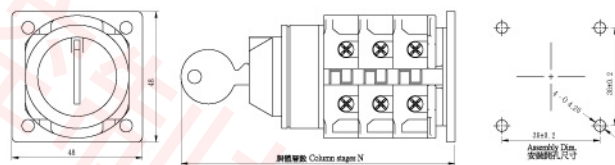
Shape dimension



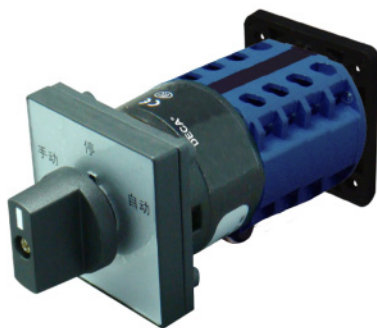
Without plate and key handle



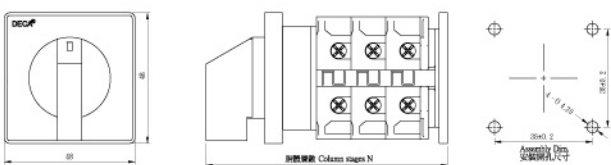
Shape dimension



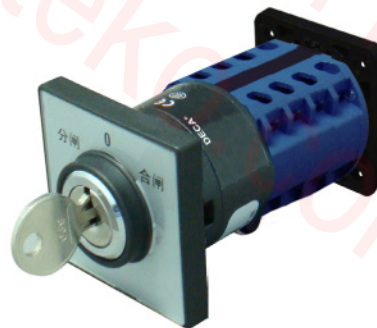
With plate and general handle



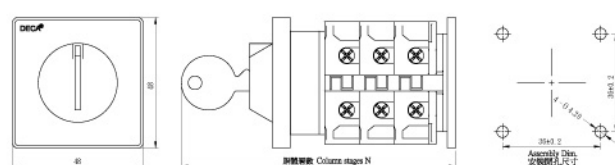
Shape dimension



With plate and key handle



Shape dimension



HC 25 series base

 Rail mounting

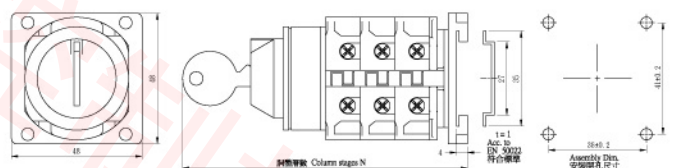
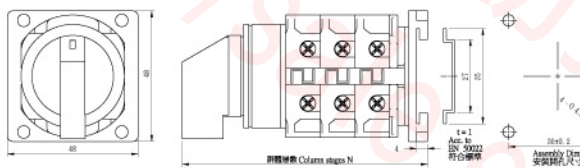
Without plate and general handle

Without plate and key handle



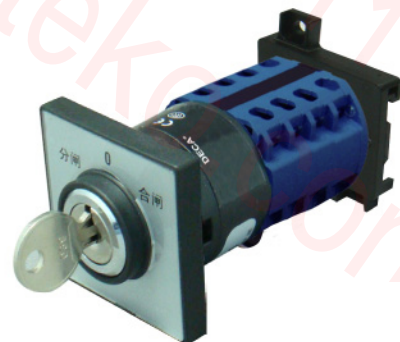
Shape dimension

Shape dimension



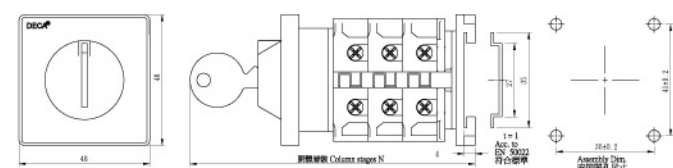
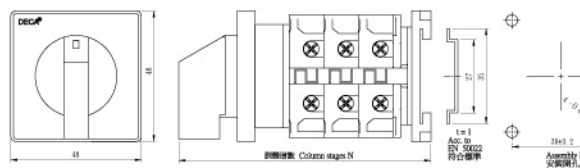
With plate and general handle

With plate and key handle



Shape dimension

Shape dimension



DECA® SwitchLab Inc. HC Series Cam Switch

HC 63 series

■特點 Special

- 1.層數若需要，最多可添加至12層。
If it need, the number of the seps can be added to 12 Max.
- 2.同一應用，可選用不同安裝方式。
Same application, the different assembly types can be selected.

■一般開關型號說明（接線方式不固定，請務必依實際需求註明代號，或來圖樣確認）

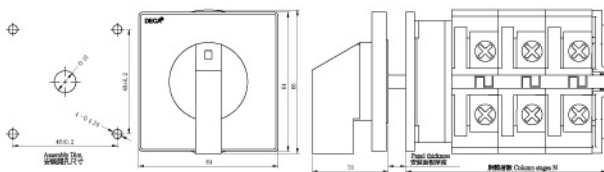
系列	電量A	安裝方式	面板大小	工位代號	接線代號	把手	把手顏色	接線端子
DGE	16	S	4	9GD	212	N	B	A
GE 通用開關	10	C 中心	0-無	首位定位角距	首位工位段數	N 標配型	B 黑	A 內置壓板
MS 多段開關	16	S 螺絲	3-30□	3(30°),4(45°)	1~9,A~C(10~12)	S 短柄型	R 紅	B 外置壓板
CO 轉換開關	25	B 底座	4-48□	6(60°),9(90°)	二位本體層數	L 長柄型		C 內置插板
OF on/off開關	63	R 軌道	6-64□	二位為起始工位 三位為結束工位 請見工位代號說明	1~9,A~C(10~12) 末位為流水號 1~9,A~Z	K 鑰匙型 G 安全型		D 外置插板
參考頁數		P50	P52	P54	P56	P58	P58	P60

🔧 Screw mounting

With plate and general handle



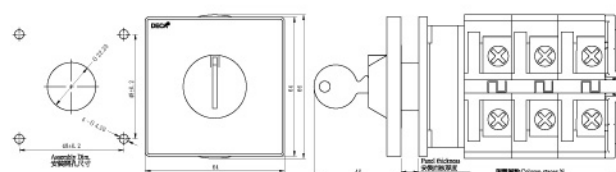
Shape dimension



With plate and key handle



Shape dimension



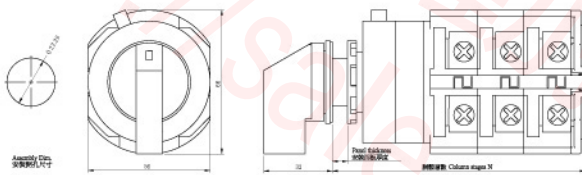
HC 63 series

Single hole mounting

Without plate and general handle



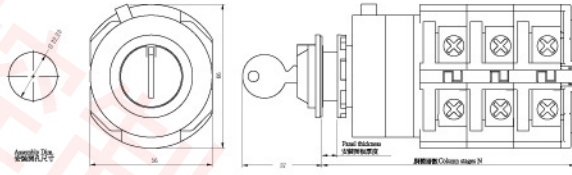
Shape dimension



Without plate and key handle



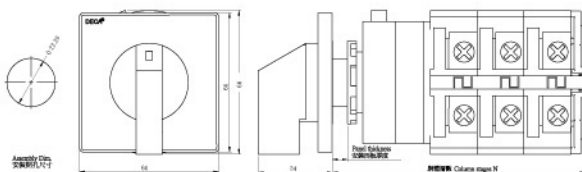
Shape dimension



With plate and general handle



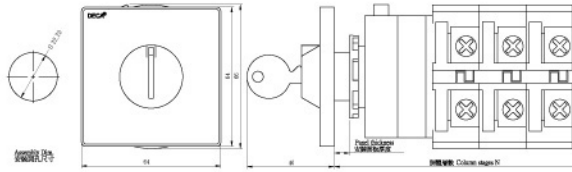
Shape dimension



With plate and key handle



Shape dimension



DECA[®] SwitchLab Inc. HC Series Cam Switch

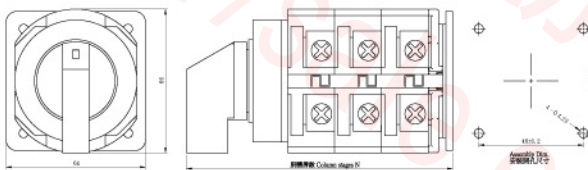
HC 63 series

Base mounting

Without plate and general handle



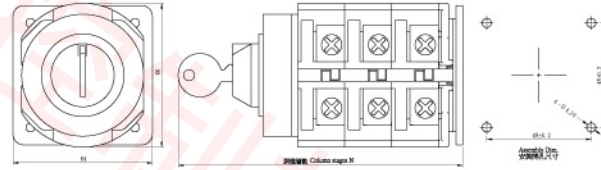
Shape dimension



Without plate and key handle



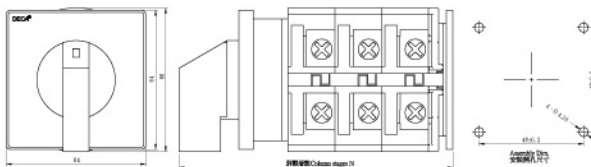
Shape dimension



With plate and general handle



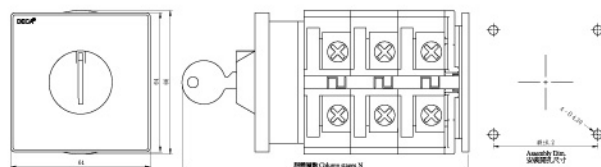
Shape dimension



With plate and key handle



Shape dimension



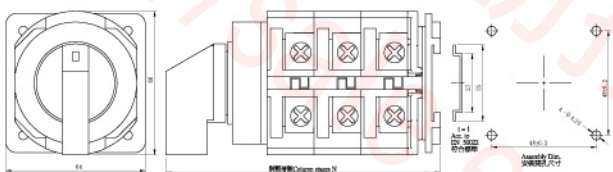
HC 63 series

 **Rail mounting**

Without plate and general handle



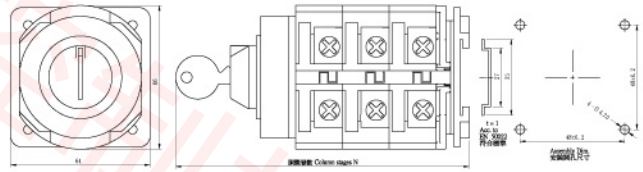
Shape dimension



Without plate and key handle



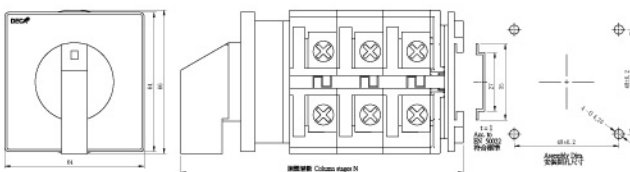
Shape dimension



With plate and general handle



Shape dimension



With plate and key handle



Shape dimension

