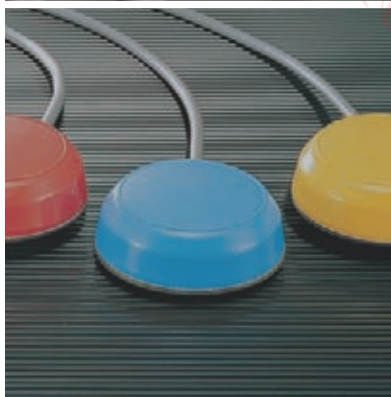
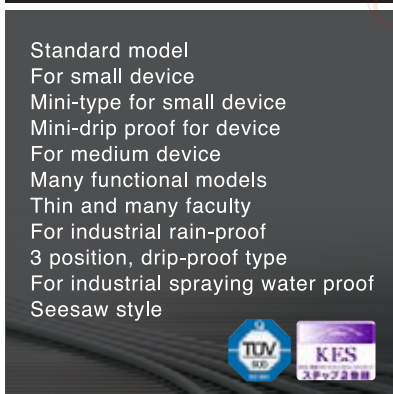


FOOT SWITCHES

Made in Japan



SM2 Series



Class change of each protection cover, action property and point of contact constitution are possible by a faculty as for SM2 series it can combine.

Features

- It is excellent in the credibility and durability.
- It can use by dust-proof, drip-proof and oiltight structure in the place of bad environmental.
(Waterproof strength seal switch inclusion)
- Change of protection cover is possible each model
- It can apply to a wide range such as momentary, alternate, 2 steps and twin type.

Major Applications

It can select in point of the machine tool, press machine, medical appliances, woodworking machine, plant industry, each industrial device etc. and the faculty.

Part Numbering

OFL - - SM2 C K KS S4

① ② ③ ④ ⑤

- ① OJIDEN FOOT LIMITSWITCH is shown.
- ② The property of a switch, pole number and the faculty are shown.
- ③ SM2 series is shown.
- ④ Pedal protection cover (C•K•KS) model is shown.
- ⑤ Pedal safety lock lever (S4) model is shown.

■ SM2 Type Series
Standard cover

● SM2C Type
With protection cover

● SM2K
With shield cover

● SM2KS Type
With shield safety cover

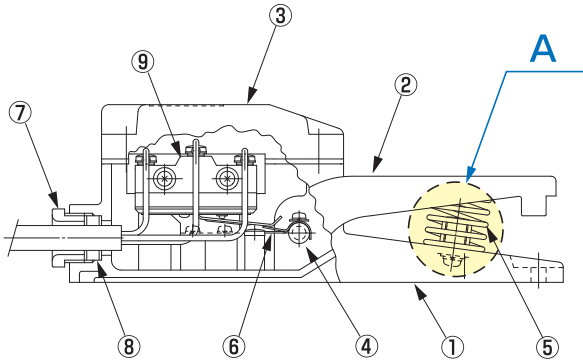
■ With safety lock lever

● SM2CS4 Type
With protection cover

● SM2KS4 Type
With shield cover

● SM2KSS4 Type
With shield safety cover

SM2 Type Inner part structure

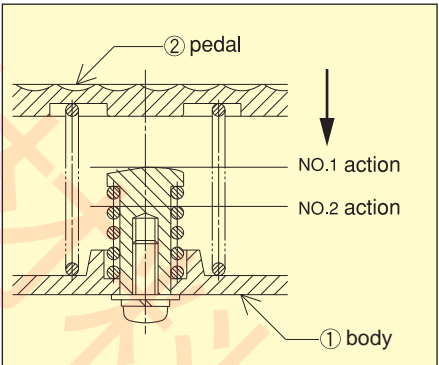


(OFL-2Y-SM2)

ITEM	PART NAME	MATERIAL
①	Body	Aluminum alloy die-cast (Munsell: 2.5G 7 /4)
②	Pedal	Aluminum alloy die-cast (Munsell: 2.5G 7/4)
③	Cover	Aluminum alloy die-cast (Munsell: 2.5G 7/4)
④	Hinge shaft	Steel (plated)
⑤	Spring	Piano wire (plated)
⑥	Operating lever	Phosphor bronze plate (PBS)
⑦	Seal connector (G1/2 screw)	Polyacetal resin (black)
⑧	Rubber packing	Chloroprene rubber (black)
⑨	Built-in switch	Z-type microswitch

2Y-SM2 series is operating 2 steps.

A Magnification

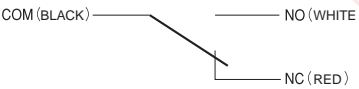


- ◆ 2 steps can be acted by using 2 switches. 1 step of the switch acts in NO. 1 action of A figure. When it moreover steps into, it steps on, the pressure drastically increases and 2 steps of the switch acts in NO. 2 action. If a leg is separated from a pedal, a switch will do self-return from 2 steps in the order of 1 step. (Each step SPDT)
- It can make point of contactconstitution 1a1b (DB) combination process.

Inclusion switch

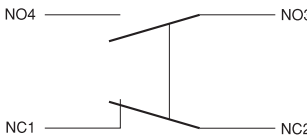
● Configuration of the Contact

Z Micro Switch 1c (SPDT)



Type
OFL-1-SM2/SPDT
OFL-2-SM2/DPDT

T Micro Switch (2CKT-DB)



Type
OFL-M-SM2/2CKT-DB
OFL-2M-SM2/4CKT-DB

R Reed Switch 1a (SPNO) (IP57 equivalent)

WHITE (-) BLACK (+)



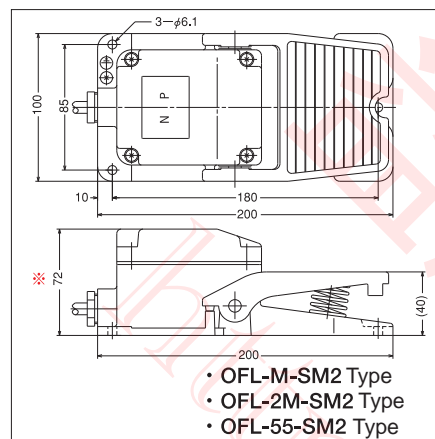
Type PFPJ-07G1

SM2 Series

Standard (Cover)

SM2 Standard series is standard foot switch without pedal protection cover.

- OFL--SM2 Type
(Center fulcrum)

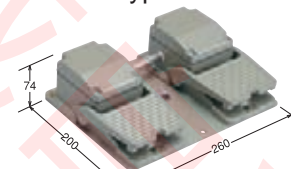


Features

- Pedal operation it is a tip of the toes or the heel step on.
- There is strength type of seal switch inclusion in protection structure IP54, too.

Twin

- OFL-TW-SM2 Type

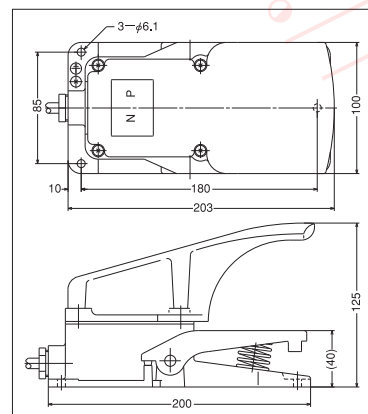


- OFL-M-SM2 Type
- OFL-2M-SM2 Type
- OFL-55-SM2 Type

With guard

Foot switch that attached pedal protection cover to SM2 standard series.

- OFL--SM2C Type
(Center fulcrum)

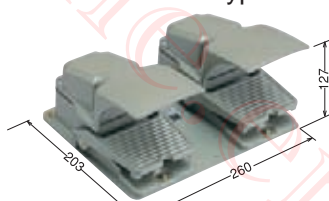


Features

- This SM2C is hit commodity that possesses an achievement of interior top of OJIDEN.

Twin Type

- OFL-TW-SM2C Type



SM2 SM2C series

Type		Function		Rating	Switch	Contact	VCTF cord	Operating force N	Weight Kg		IP class
		Momentary	Alternate						SM2	SM2C	
OFL- 1 -SM2	OFL- 1 -SM2C	●	—	10A-250VAC	MICRO Switch Z	1c	1.25mm² 3c 1.5m	31 (3.1kgf)	1.0	1.3	54
OFL- 2 -SM2	OFL- 2 -SM2C	●	—			2c	1.25mm² 6c 1.5m		1.1	1.4	
OFL- 3 -SM2	OFL- 3 -SM2C	●	—			3c	(applicable sheath outside diameter)		1.0	1.3	
OFL- TW -SM2	OFL- TW -SM2C	●	—			1c for each side			2.5	2.8	
OFL- 2Y -SM2	OFL- 2Y -SM2C	●	—			1c for each position	1.25mm² 6c 1.5m		1st position 17 2nd position 80	1.2	
OFL- M -SM2	OFL- M -SM2C	●	—	10A-250VAC	T	1a 1b	(applicable sheath outside diameter)	25 (2.6kgf)	1.0	1.3	
OFL- 2M -SM2	OFL- 2M -SM2C	●	—			2a 2b			1.0	1.3	
OFL- BS -SM2	OFL- BS -SM2C	—	●	5A-250VAC	Z Lock alternate operation type	1c	1.25mm² 3c 1.5m	33 (3.4kaf)	1.0	1.3	

Low-level rating type

OFL- G -SM2	OFL- G -SM2C	●	—	0.1A-30VDC	V (gold clad contact)	1c	1.25mm ² 3c 1.5m	31 (3.1kgf)	1.0	1.3	54
OFL- 2G -SM2	OFL- 2G -SM2C	●	—	0.1A-30VDC	V (gold clad contact)	2c	1.25mm ² 6c 1.5m		1.1	1.4	

Rain-proof type

(reinforced drip resistant type)

◎ OFL- BS5 -SM2	OFL- BS5 -SM2C	—	●	5A-250VAC	Z Lock alternate operation type	1c	1.25mm ² 3c 1.5m	33 (3.4kgf)	1.2	1.5	54
-----------------	----------------	---	---	-----------	------------------------------------	----	-----------------------------	----------------	-----	-----	----

Seal structure switch inclusion type

(reinforced drip resistant type)

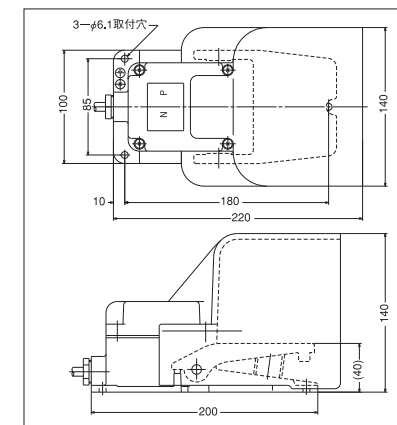
OFL- R -SM2	OFL- R -SM2C	●	—	0.5A-220VAC	Reed switch R (IP57)	1a	0.75mm ² 2c 2m	20 (2.0kgf)	1.0	1.2	54
OFL- 55 -SM2	OFL- 55 -SM2C	●	—	10A-250VAC	Z (IP54)	1c	1.25mm ² 3c 2.5m				
OFL- VG5 -SM2	OFL- VG5 -SM2C	●	—	0.1A-30VDC	V (IP67)	1c	0.75mm ² 3c 3.5m	33 (3.4kgf)	1.2	1.5	
OFL-2VG5-SM2	OFL-2VG5-SM2C	●	—	0.1A-30VDC	V (IP67)	2c	0.75mm ² 6c 2.5m		1.2	1.5	

If marked ◎, the type does not permit the use of the pedal safety lock lever (S4); otherwise, the lever may be used. (For necessary modification, please contact us.)
Type notation example: OFL-1-SM2CS4.

With shield

Shield cover was attached to SM2 standard series.

- OFL--SM2K Type
(Center fulcrum)

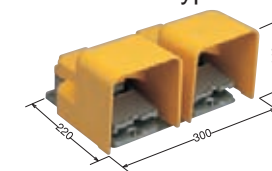


Features

- Shield cover accompaniment that strengthened wrong operation prevention more.
- The machine tool, industrial machine is a model proud of an achievement of interior top.

Twin Type

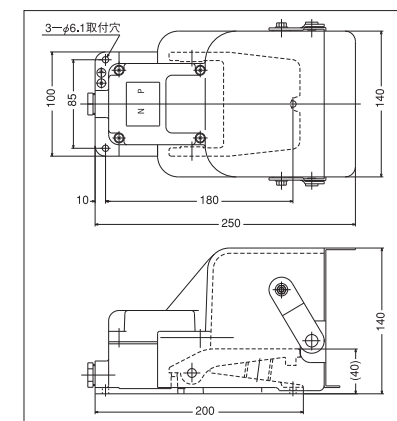
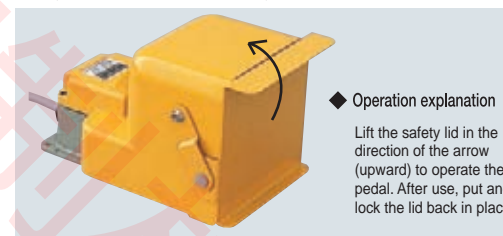
- OFL-TW-SM2K Type



With safety cover

It is design that attached safe cover to SM2K conformed to safety.

- OFL--SM2KS Type
(Center fulcrum)

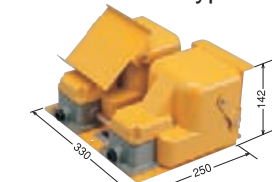


Features

- It is specification that conformed to safe standard.
- Be numerous as the export and country introversion each maker.

Twin Type

- OFL-TW-SM2KS Type



SM2K SM2KS series

Type				Function		Rating	Switch	Contact	VCTF cord	Operating force N	Weight Kg		IP class
				Momentary	Alternate						SM2K	SM2KS	
OFL- 1 -SM2K	OFL- 1 -SM2KS	●	—	10A-250VAC	MICRO Switch Z	1c	1.25mm ² 3c 1.5m	31 (3.1kgf)	1.8	2.2	54		
OFL- 2 -SM2K	OFL- 2 -SM2KS	●	—			2c	1.25mm ² 6c 1.5m		2.0	2.4			
OFL- 3 -SM2K	OFL- 3 -SM2KS	●	—			3c	(applicable sheath outside diameter)		1.7	2.1			
OFL- TW -SM2K	OFL- TW -SM2KS	●	—			1c 各側とも			3.9	4.3			
OFL- 2Y -SM2K	OFL- 2Y -SM2KS	●	—			1c 各段とも			1.25mm ² 6c 1.5m	1st position 17 2nd position 80		1.9	2.3
OFL- M -SM2K	OFL- M -SM2KS	●	—	10A-250VAC	T	1a 1b	(applicable sheath outside diameter)	25 (2.6kgf)	1.6	2.0			
OFL- 2M -SM2K	OFL- 2M -SM2KS	●	—			2a 2b		1.7	2.1				
◎ OFL- BS -SM2K	OFL- BS -SM2KS	—	●	5A-250VAC	Z Lock alternate operation type	1c	1.25mm ² 3c 1.5m	33 (3.4kgf)	1.8	2.2			

Low-level rating type

OFL- G -SM2K	OFL- G -SM2KS	●	—	0.1A-30VDC	V (gold clad contact)	1c	1.25mm ² 3c 1.5m	31 (3.1kgf)	1.8	2.2	54
OFL- 2G -SM2K	OFL- 2G -SM2KS	●	—	0.1A-30VDC	V (gold clad contact)	2c	1.25mm ² 6c 1.5m		2.0	2.4	

Rain-proof type

(reinforced drip resistant type)

◎ OFL- BS5 -SM2K	OFL- BS5 -SM2KS	—	●	5A-250VAC	Z Lock alternate operation type	1c	1.25mm ² 3c 1.5m	33 (3.4kgf)	2.0	2.4	54
------------------	-----------------	---	---	-----------	------------------------------------	----	-----------------------------	----------------	-----	-----	----

Seal structure switch inclusion type

(reinforced drip resistant type)

OFL- R -SM2K	OFL- R -SM2KS	●	—	0.5A-220VAC	Reed switch R (IP57)	1a	0.75mm ² 2c 2m	20 (2.0kgf)	1.8	2.2	54
OFL- 55 -SM2K	OFL- 55 -SM2KS	●	—	10A-250VAC	Z (IP54)	1c	1.25mm ² 3c 2.5m				
OFL- VG5 -SM2K	OFL- VG5 -SM2KS	●	—	0.1A-30VDC	V (IP67)	1c	0.75mm ² 3c 3.5m	33 (3.4kgf)	2.0	2.4	
OFL-2VG5-SM2K	OFL-2VG5-SM2KS	●	—	0.1A-30VDC	V (IP67)	2c	0.75mm ² 6c 2.5m		2.1	2.5	

If marked ◎, the type does not permit the use of the pedal safety lock lever (S4); otherwise, the lever may be used. (For necessary modification, please contact us.)
Type notation example: OFL-1-SM2KS4.

2NY-SM2 Series

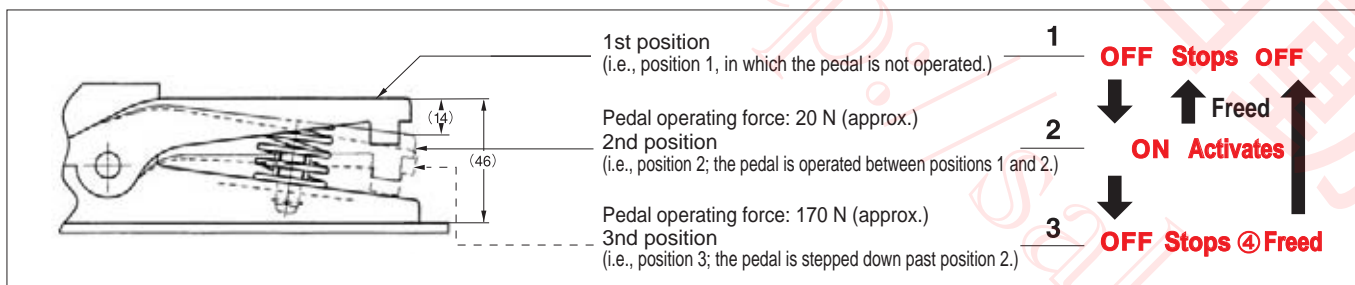
3 position type

OFL-2NY-SM2 type series is OFF⇒ON⇒OFF for the risk aversion based on ergonomics. 3 position (three-step type) foot switch.

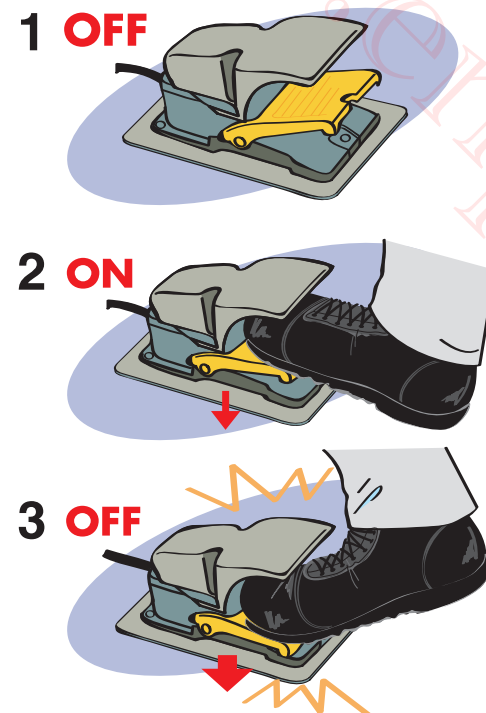
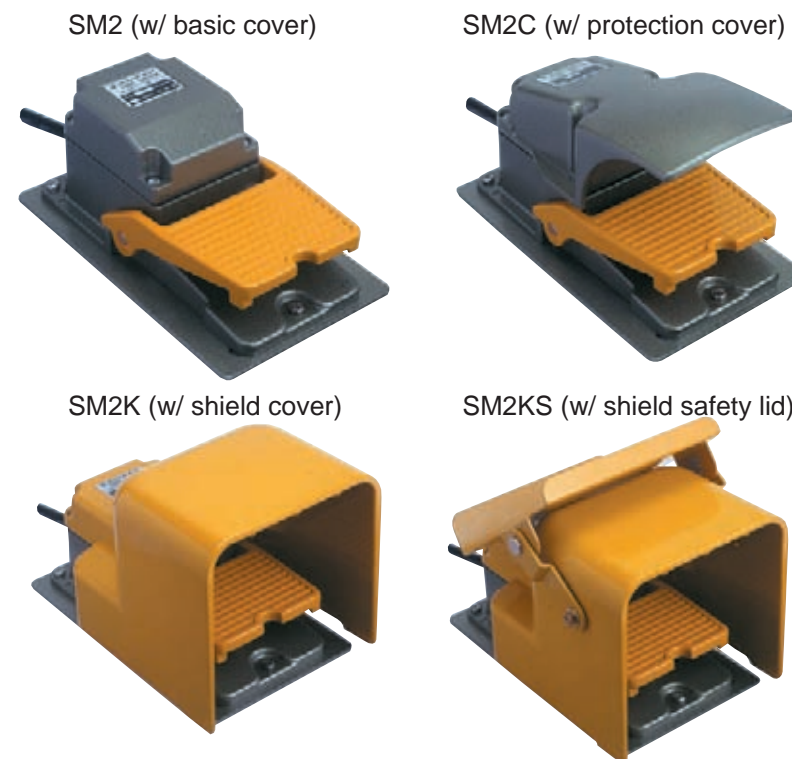
Features

- It is excellent in the credibility.
- It can use by drip-proof/oiltight structure in the place of bad environment.
- Change of protection cover is possible each model.
- By two points of contact (2a), double safety measures are possible.
- Standard specification with the attached code 2.5m.

Pedal Positions and the Workings of the Triple (3-position) Type Foot Switch



3-position Foot Switch -- Perfect Choice for Hazard Avoidance in Emergencies



2NY-SM2 type series

Type	Weight kg (approx.)	Operating force N	Function	Rating	Switch or Contact	S-VCTF cord	IP class
OFL-2NY-SM2	2.0	①→② 20N ②→③ 170N	2a Momentary OFF⇒ON⇒OFF	Resistance load 1A-125VAC 1A-30VDC	3-position switch (uses NO-C segment) 2 contacts	Included; outside diameter φ8.2 (0.75 mm ² 5 strands, 2.5 m).	54
OFL-2NY-SM2C	2.2						
OFL-2NY-SM2K	2.7						
OFL-2NY-SM2KS	3.1						

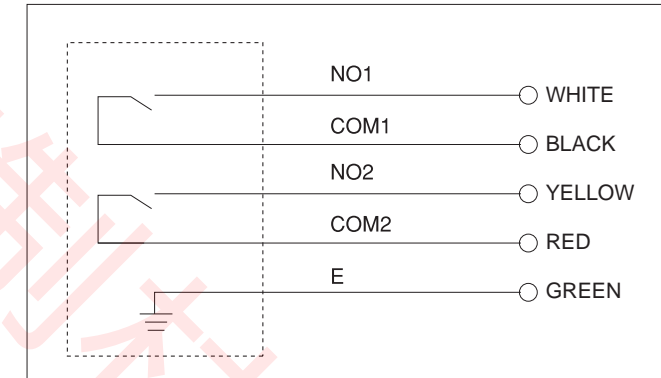
2-poles 3 position

Double safety measures are possible for the three optimal positions for risk aversion because of two points of contact, (2a)

Characteristics of the Built-in Enable Switch and Pedal Operation

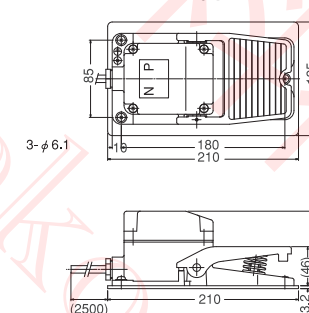
- The switch is a 3-position foot switch ergonomically designed to cycle through OFF>ON>OFF positions for hazard-free operation.
- The shift from position 1 to 2 provides a light-yet-firm feel in response to stepping on the pedal thanks to the internal snap-action mechanism. (operating force: 20 N)
- The shift from position 2 to 3, on the other hand, is accompanied by a firm feel in response to stepping on the pedal. (operating force: 170 N)
- The switch is constructed in such a way that it will not go ON when the pedal is stepped on and released (i.e., a shift from position 3 to 1, with the switch going OFF in response to each operation; 9.2.5.8 of IEC60204-1).
- The switch is composed of parts certified under (compliant with) overseas major safety standards.

Contact Configuration and Connection Cords (color coding)

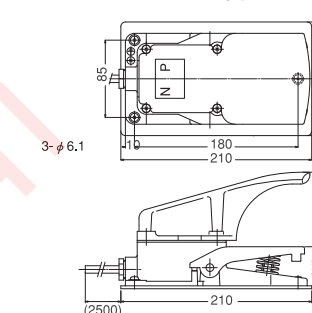


Chart

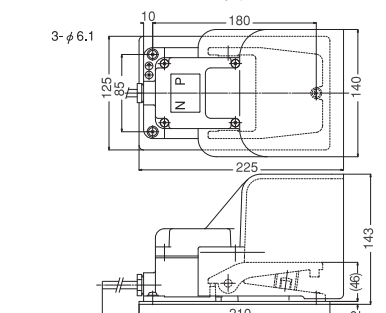
2NY-SM2 Type



2NY-SM2C Type



2NY-SM2K Type



Points to Note When Handling the Switches

It is very important that you keep the following in mind when handling the switches to avoid injuries, electric shocks, fires, product damage and malfunction, and other incidents.

- Be sure that the electrical ratings are within the indicated range.
- To use the 3-position switch as part of a system configured to high safety standards, connect its 2 contacts to a mismatch detection circuit (e.g., safety relay module; ISO13849-1/EN954-1).
- Be sure that the wiring is correct, noting the contact configuration and lead wire color coding scheme. Inappropriate wiring can cause malfunction, short-circuiting, or other such problems.
- Be sure to turn off the power before wiring or maintenance/inspection work to avoid electric shocks and fires.
- Do not replace the accessory cords or the built-in switch. Doing so could lead to deterioration of the property of the switch to resist water or adversely affect its operating characteristics.
- Use the lead wire (green) or an external terminal screw for connection to ground. Doing so is particularly important in avoiding such hazards as electric shocks.
- Be sure that the operating range (stroke) of the pedal is free of a foreign object during use.
- To fix the switch in place, remove the base, and mount it on a level surface using the 3-φ6.1 mounting hole.
- Do not subject the foot switch to sudden impact. Dropping it or stomping on its pedal could lead to malfunction or result in a shorter service life.
- As necessary, contact us for cord extension or for other requests.

Contact Ratings (built-in enable switch)

Rated insulated voltage (Ui)			125V	
Rated conducted current (Ith)			3A	
Rated operating voltage (Ue)			30V	125V
Rated operating current (Ie)	AC	Resistance load	—	1A
		Induction load	—	0.7A
	DC	Resistance load	1A	0.2A
		Induction load	0.7A	0.1A
Contact configuration (3-position switch)			2 contacts	

• Minimum applicable load (reference only) = 3 V AC/DC, 5 mA
(The actual operating range may vary depending on operating conditions and load types.)

Performance Testing

Standard operating conditions	Operating ambient temperature: -25~to +60°C (without freezing) Relative humidity (RH): 45% to 85% (without condensation) Storage ambient temperature: -40~to +80°C (without freezing)
Contact resistance	50mΩ or less (initial value)
Insulation resistance	Between live and non-live metal parts: 100MΩ or more (by 500 VDC insulation tester) Between live areas of different polarities: 100MΩ or more (by 500 VDC insulation tester)
Withstand voltage	1500VAC
Open/close frequency	1200 times/h
Mechanical life (durability)	1,000,000 activations or more if from position ①⇒②⇒① 100,000 activations or more if from position ①⇒②⇒③⇒①
Electrical life (durability)	100,000 activations or more
Impact resistance	Error operation : 100m/S ² Durability : 1000m/S ²
Vibration resistance	Error operation: 5 to 55 Hz, half amplitude of 0.5 mm or more Durability: 16.7 Hz, half amplitude of 1.5 mm or more
Protective construction	IP54 (with foot switch enclosed)

SM2 Series (TÜV approved)

IP class IP54

By regulation, all tooling machines exported to Europe must bear the CE Mark. The products introduced herein are recognized as being EN-compliant (i.e., TUV-certified) and, therefore, may be used with confidence.



◆EN

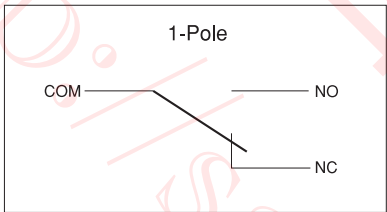
Features

- The SM2 series (TUV approved) allows easy recomposition with each protection cover. The features and the model depend on the protection cover.

Major Applications

Various machine tools, presses, medical appliances, other industrial machines.

Contact structure



Specifications

Type	Rating	Initial Contact Resistance	Dielectric Strength	Insulation Resistance	Electrical Life	IP class	TUV Approved.No.
OFL- V -SM2	10A 250V AC	50mΩ Max.	AC2000V 1minute	100MΩ Min.	125.000Min. Operations	Spray resistant type IEC IP 54	B 09 06 15566 004 EN60204-1:2006
OFL- VG -SM2	0.1A 125V AC 0.1A 30V DC	50mΩ Max.	AC1500V 1minute	100MΩ Min.	1.000.000Min. Operations	Spray resistant type IEC IP 54	
OFL- ZG -SM2	0.1A 125V AC 0.1A 30V DC	50mΩ Max.	AC1250V 1minute	100MΩ Min.	2.000.000Min. Operations	Spray resistant type IEC IP 54	

※ without cable
Applicable sheath outside diameter: φ8~φ11

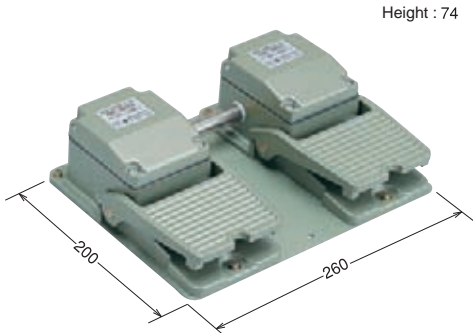
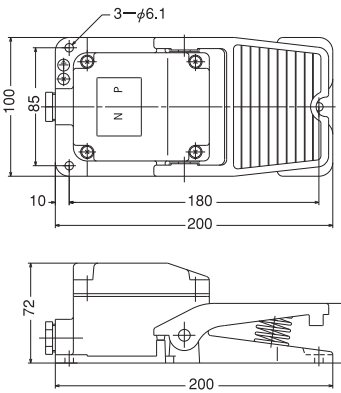
◆ **V** TYPE:Solder terminal ◆ **ZG** TYPE:Screw terminal

■ Type OFL-**V**-SM2 series

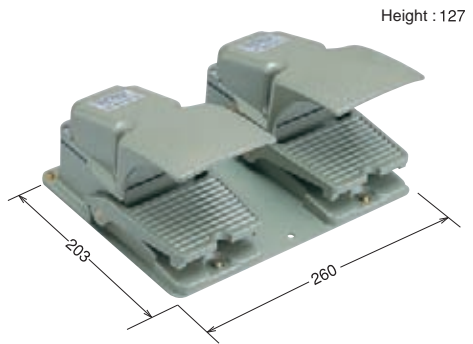
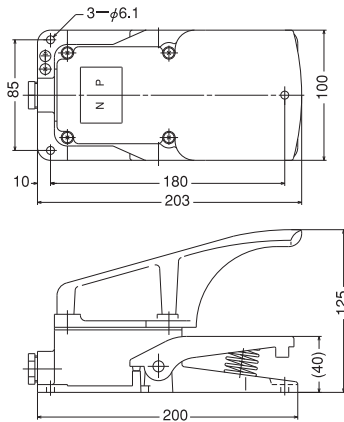
V Type	VG Type	ZG Type	Function	Contact	Operating	Weight
OFL- V -SM2	OFL- VG -SM2	OFL- ZG -SM2	Momentary	1	31N	820g
OFL- 2V -SM2	OFL- 2VG -SM2	OFL- 2ZG -SM2	Momentary	2	31N	830g
OFL- TV -SM2	OFL- TVG -SM2	OFL- TZG -SM2	Momentary (Twin Type)	1 EACH SIDE	31N	2,340g
OFL- 2TV -SM2	OFL- 2TVG -SM2	OFL- 2TZG -SM2	Momentary (Twin Type)	2 EACH SIDE	31N	2,350g
OFL- V -SM2C	OFL- VG -SM2C	OFL- ZG -SM2C	Momentary	1	31N	1,090g
OFL- 2V -SM2C	OFL- 2VG -SM2C	OFL- 2ZG -SM2C	Momentary	2	31N	1,100g
OFL- TV -SM2C	OFL- TVG -SM2C	OFL- TZG -SM2C	Momentary (Twin Type)	1 EACH SIDE	31N	2,880g
OFL- 2TV -SM2C	OFL- 2TVG -SM2C	OFL- 2TZG -SM2C	Momentary (Twin Type)	2 EACH SIDE	31N	2,890g
OFL- V -SM2K	OFL- VG -SM2K	OFL- ZG -SM2K	Momentary	1	31N	1,690g
OFL- 2V -SM2K	OFL- 2VG -SM2K	OFL- 2ZG -SM2K	Momentary	2	31N	1,700g
OFL- TV -SM2K	OFL- TVG -SM2K	OFL- TZG -SM2K	Momentary (Twin Type)	1 EACH SIDE	31N	4,080g
OFL- 2TV -SM2K	OFL- 2TVG -SM2K	OFL- 2TZG -SM2K	Momentary (Twin Type)	2 EACH SIDE	31N	4,090g
OFL- V -SM2KS	OFL- VG -SM2KS	OFL- ZG -SM2KS	Momentary	1	31N	2,090g
OFL- 2V -SM2KS	OFL- 2VG -SM2KS	OFL- 2ZG -SM2KS	Momentary	2	31N	2,100g
OFL- TV -SM2KS	OFL- TVG -SM2KS	OFL- TZG -SM2KS	Momentary (Twin Type)	1 EACH SIDE	31N	5,060g
OFL- 2TV -SM2KS	OFL- 2TVG -SM2KS	OFL- 2TZG -SM2KS	Momentary (Twin Type)	2 EACH SIDE	31N	5,070g

Type Dimension Twin Type Foot Switch

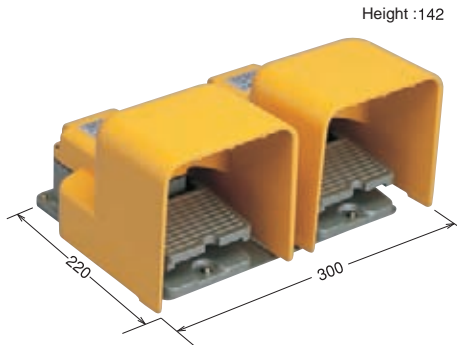
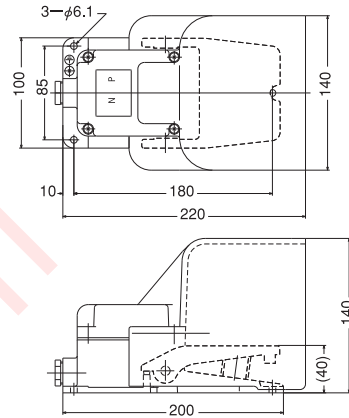
- SM2 Standard (Cover)
- Type SM2 Series
 - w/ seal connector (G1/2 screw)



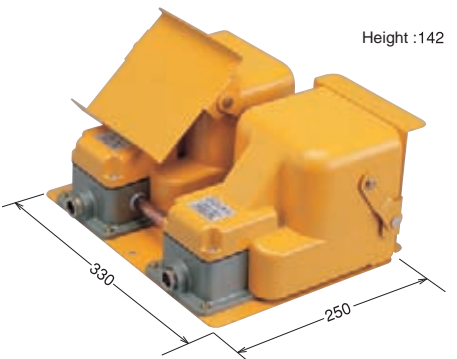
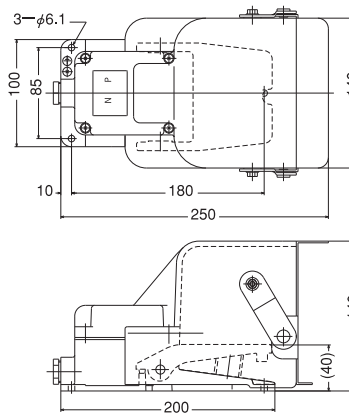
- With guard
- Type SM2C Series



- With shield
- Type SM2K Series



- With safety cover
- Type SM2KS Series



SM2 S4 Series (TÜV approved)

With pedal lock safety lever

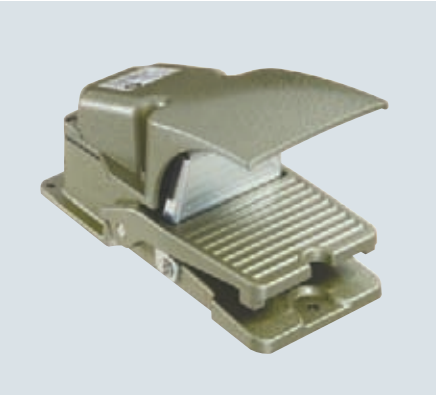


Design Registration-certified Product

Generating of the trouble by “the thing was dropped”, “the pedal having been stepped on carelessly”, etc.
It is the foot switch which attached the object for malfunction prevention of OJIDEN, and the pedal lock safety lever “S4” in SM2 type series.



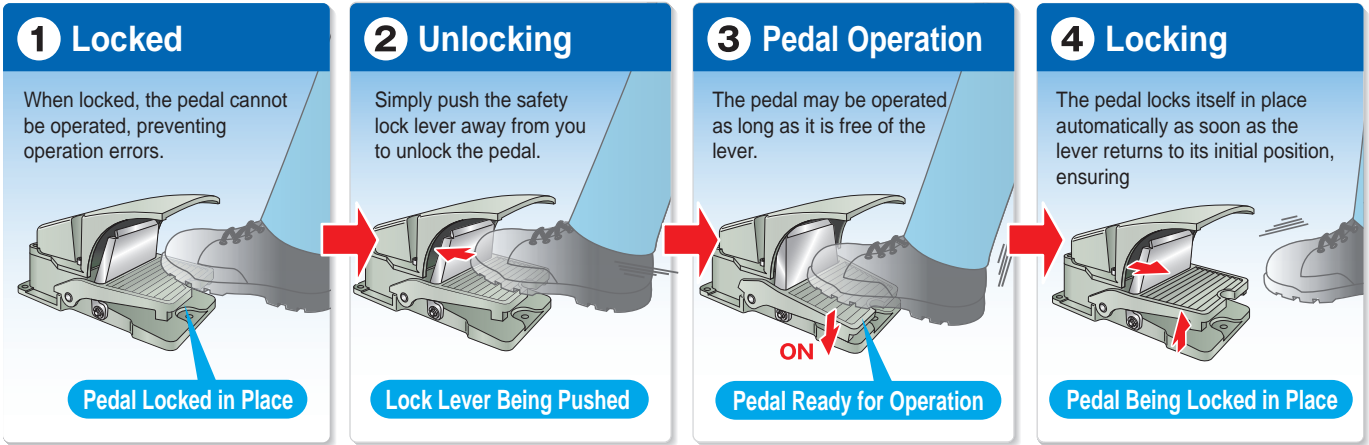
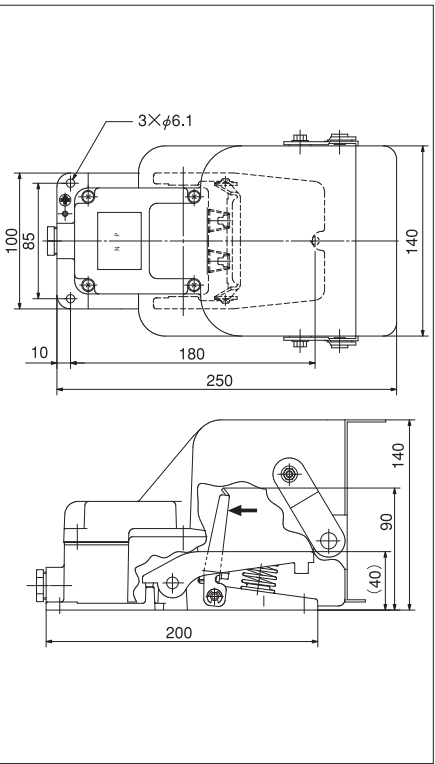
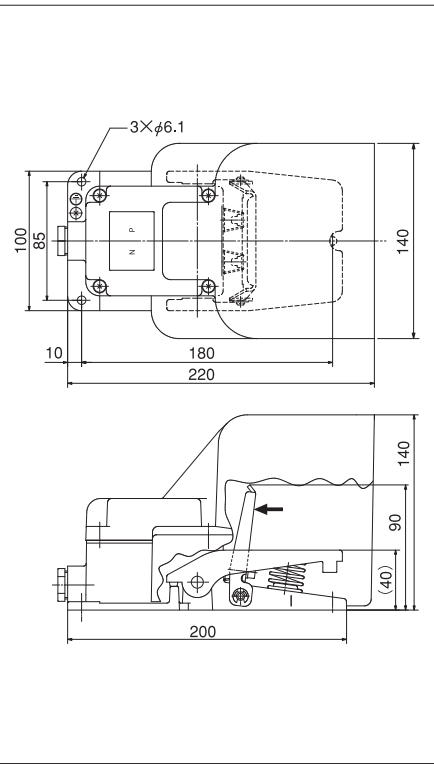
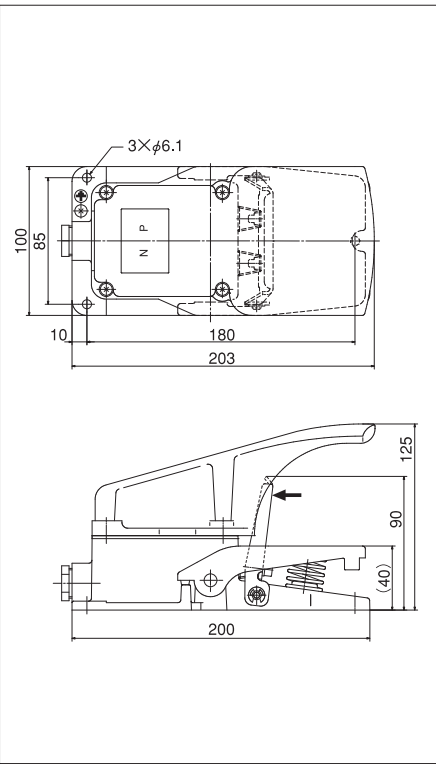
● OFL- V -SM2CS4 Type
(With protection cover)



● OFL- VG -SM2KS4 Type
(With shield cover)



● OFL- ZG -SM2KSS4 Type
(With safety cover)



Operation of pedal lock safety lever

It works a pedal during bringing down lever within broken line circle to arrow direction (the front) and on and the leg is separated and it is automatic off and the lever return and lock.



Specifications

Type	Rating	Initial Contact Resistance	Dielectric Strength	Insulation Resistance	Electrical Life	IP class	TÜV Approved.No.
OFL- V -SM2CS4	10A 250V AC	50mΩ Max.	AC2000V 1minute	100MΩ Min.	125.000Min. Operations	Spray resistant type IEC IP 54	B 09 06 15566 004 EN60204-1: 2006
OFL- VG -SM2CS4	0.1A 125V AC 0.1A 30V DC	50mΩ Max.	AC1500V 1minute	100MΩ Min.	1.000.000Min. Operations	Spray resistant type IEC IP 54	
OFL- ZG -SM2CS4	0.1A 125V AC 0.1A 30V DC	50mΩ Max.	AC1250V 1minute	100MΩ Min.	2.000.000Min. Operations	Spray resistant type IEC IP 54	

※ without cable

Applicable sheath outside diameter: φ8~φ11

◆ V, VG TYPE: Solder terminal ◆ ZG TYPE: Screw terminal

■ Type OFL- V -SM2 S4 series

V Type	VG Type	ZG Type	Function	Contact	Operating	Weight
OFL- V -SM2CS4	OFL- VG -SM2CS4	OFL- ZG -SM2CS4	Momentary	1	31N	1240g
OFL- 2V -SM2CS4	OFL- 2VG -SM2CS4	OFL- 2ZG -SM2CS4	Momentary	2	31N	1250g
OFL- TV -SM2CS4	OFL- TVG -SM2CS4	OFL- TZG -SM2CS4	Momentary (Twin Type)	1 EACH SIDE	31N	3180g
OFL- 2TV -SM2CS4	OFL- 2TVG -SM2CS4	OFL- 2TZG -SM2CS4	Momentary (Twin Type)	2 EACH SIDE	31N	3190g
OFL- V -SM2KS4	OFL- VG -SM2KS4	OFL- ZG -SM2KS4	Momentary	1	31N	1840g
OFL- 2V -SM2KS4	OFL- 2VG -SM2KS4	OFL- 2ZG -SM2KS4	Momentary	2	31N	1850g
OFL- TV -SM2KS4	OFL- TVG -SM2KS4	OFL- TZG -SM2KS4	Momentary (Twin Type)	1 EACH SIDE	31N	4380g
OFL- 2TV -SM2KS4	OFL- 2TVG -SM2KS4	OFL- 2TZG -SM2KS4	Momentary (Twin Type)	2 EACH SIDE	31N	4390g
OFL- V -SM2KSS4	OFL- VG -SM2KSS4	OFL- ZG -SM2KSS4	Momentary	1	31N	2240g
OFL- 2V -SM2KSS4	OFL- 2VG -SM2KSS4	OFL- 2ZG -SM2KSS4	Momentary	2	31N	2250g
OFL- TV -SM2KSS4	OFL- TVG -SM2KSS4	OFL- TZG -SM2KSS4	Momentary (Twin Type)	1 EACH SIDE	31N	5360g
OFL- 2TV -SM2KSS4	OFL- 2TVG -SM2KSS4	OFL- 2TZG -SM2KSS4	Momentary (Twin Type)	2 EACH SIDE	31N	5370g