

AP AUSPICIOUS

CONTROL COMPONENTS



2008/B



22ø,30ø SERIES CONTROL UNITS IP65**Standard and Certifications****CSA Certified 1689803****Applicable Requirements**

CAN/CSA-C22.2 NO. 0 – M91, General Requirements – Canadian Electrical.Part II

CAN/CSA-C22.2 NO.14.05-Industrial Control Equipment

CSA Std C22.2 NO.65.93-Wire Connector

UL STD NO. 508, 17th Ed-Industrial Control Equipment to the requirements of CSA standard NO. 14-05

Auxiliary device, contact rated 120VAC 6A, resistive, heavy pilot duty or A600 with NC and NO contact, used

for push button switches, selector switches, double push button switches, push button switches with illuminated, selector switch with illuminated, pilot lights.

TUV Rheinland Group

License No. R50062119

EN 60947-1 : 2004

EN 60947-5-1 : 2004

License No. R50062158

EN 60947-1 : 2004

EN 60947-5-1 : 2004

EN 60947-5-5 : 1997

CE Marked : EN60947-5-1

Rating :

Thermal current 1th 10A 50/60HZ

Insulation Voltage Ui 600V

Enclosed thermal current 1the 10A

Short-Circuit current 1000A

AC-15 120V 6A, 240V 3A

AC-12 480V 1.5A, 600V 1.2A

DC-12 120V 2.2A, 240V 0.6A, 480V 0.4A

IP-Enclosure IP65

Ambient temperature : -20 to 60°C

Contact resistance : 50 mΩ max.

Life :

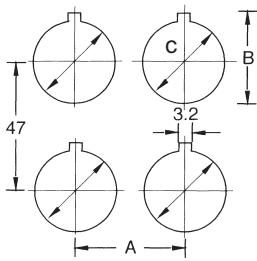
Push buttons : 1 million operations

Contact blocks : 1 million operations

Selector and key selector : 600,000 operations

22ø,30ø SERIES CONTROL UNITS

Panel cut - out



Components parts

Dimensions

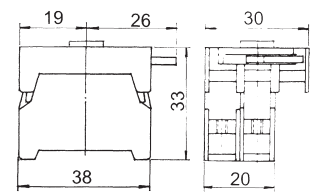
	Series	22ø	25ø	30ø
A	Standard spacing	30	30	38
	Mushroom head 40ø	42	42	42
	Long knob selector	44	44	44
B		24.2	26.6	32
C		22.5ø	25.4ø	30.5ø

S-9 Filament Lamp Rated Voltage



6V, 12V, 24V, 30V
36V, 48V, 60V

Lamp holder, contact block 1/O or 1/C with coupler

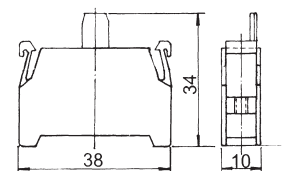


S-9 Neon Lamp Rated Voltage



110V, 220V, 380V, 440V
colour : Red, Green

Contact block 1/O (N/O), (1a)
1/C (N/C), (1b)

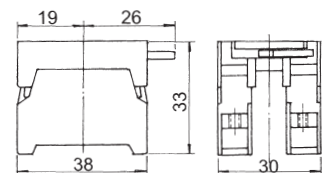
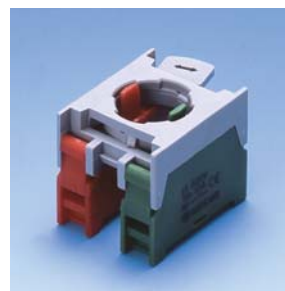


S-9 Led Lamp Rated Voltage

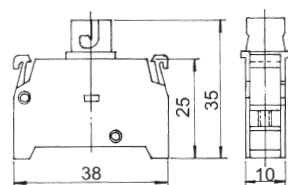


6V, 12V, 24V
110V/220V
220V/440V
colour : Red, Green,
Orange Yellow, Blue,
White

Contact block with coupler 1O/C,(N/O+N/C),(1a+1b)

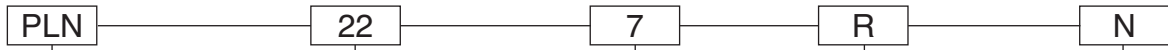


Lamp Holder



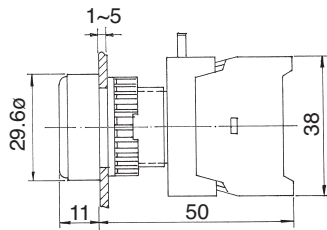


PILOT LAMP,22ø,25ø,30øIP65

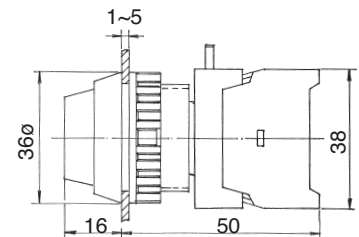


Type	Mounting hole	Voltage	Lens colour	Lens colour
PLN22		1		L:Led
PLNS22	22 : 22ø	2	i · R: Red	F:Filament bulb
PLN22A , PLN25A	25 : 25ø	3	i · G: Green	N:Neon lamp
PLN22B , PLN25B	30 : 30ø	4	i · Y: Yellow	
PLN22C , PLN25C		5	i · O: Orange	
L22		6	i · BL: Blue	
PLN30		7	i † C : Clear	
PLT22 W/TR		8	i † W: White	

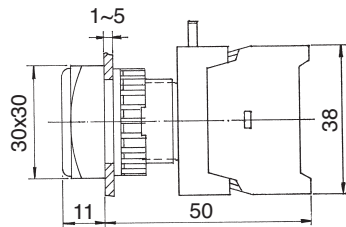
PLN-22



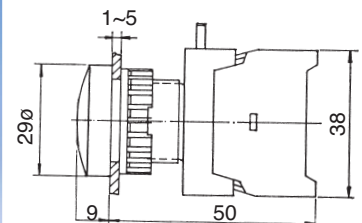
PLN-30



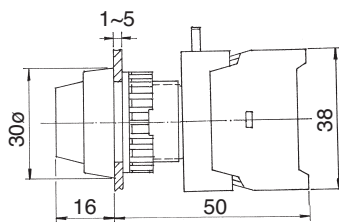
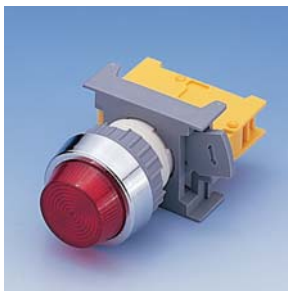
PLNS-22



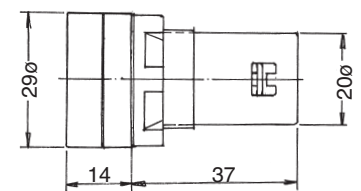
PLN-22C
PLN-25C



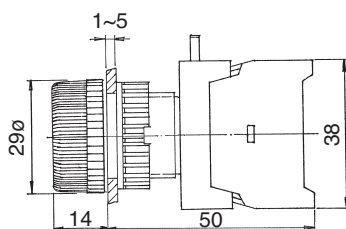
PLN-22A
PLN-25A



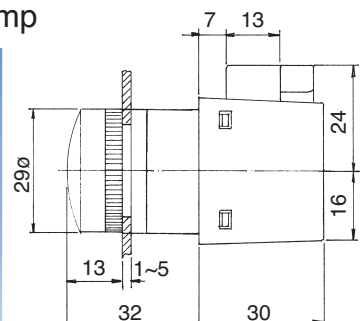
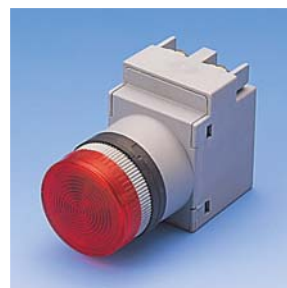
L22, 22ø LED lamp



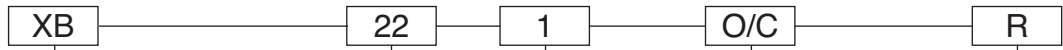
PLN-22B
PLN-25B



PLT-22
Transformer pilot lamp

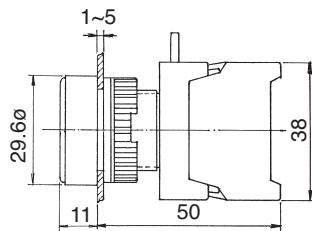


PUSH BUTTON SWITCHES, IP65

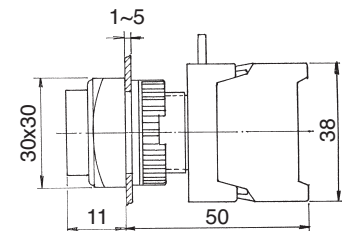


Type	Mounting hole	No. of contact	Type of contact	Lens colour
XB, GBF, PBF: Flat head XBL, GBL, PBL: Long head XBS: Square head XLS: Square long head XBG: Guard ring XGS: Guard ring square XE, EB, GEB, XES: Mushroom head 40ø BXE, BEB: Mushroom head 60ø LEB, GLEB: Latching head PF, EPF, GPF, GEPF: Push on-Push off	22 : 22ø 30 : 30ø	1 2 3 4	O: N/O(a) C: N/C(b) O/C: N/O+N/C 1a+1b	i · R: Red i · G: Green i · Y: Yellow i · BL: Blue i · BK: Black i † W: White

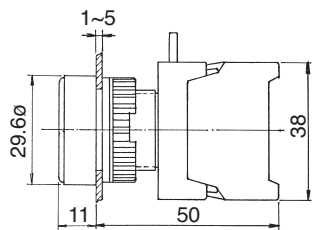
XB22-1/O



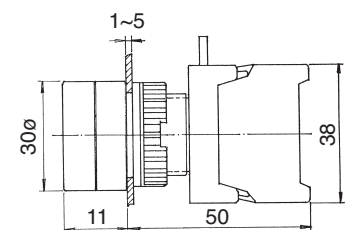
XLS22-1/O XLS22-10/C
XLS22-1/C



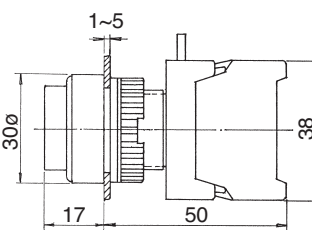
XB22-10/C



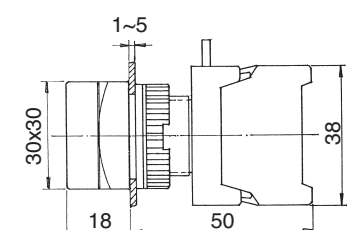
XBG22-1/O XBG22-10/C
XBG22-1/C



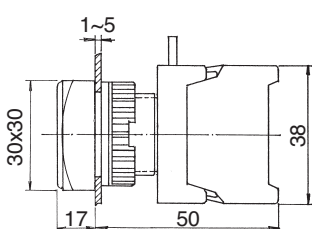
XBL22-1/O XBL22-10/C
XBL22-1/C



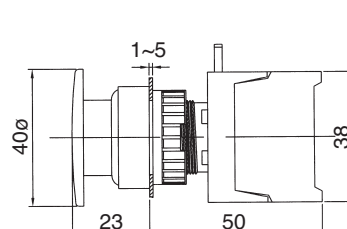
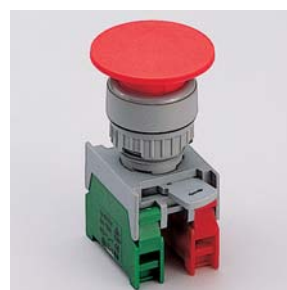
XGS22-1/O XGS22-10/C
XGS22-1/C



XBS22-1/O XBS22-10/C
XBS22-1/C



XE22-1/O XE22-10/C
XE22-1/C

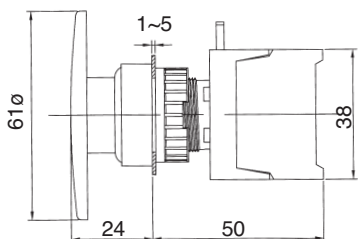


PUSH BUTTON SWITCHES, IP65

BXE22-1/O
BXE22-1/C



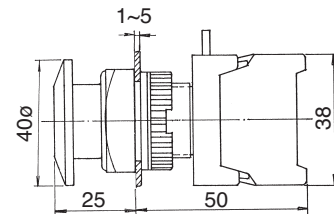
BXE22-10/C



XES22-1/O
XES22-1/C



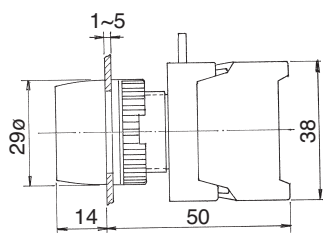
XES22-10/C



GBF22-1/O
GBF22-1/C



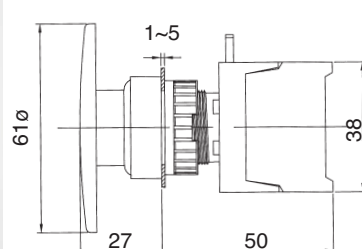
GBF22-10/C



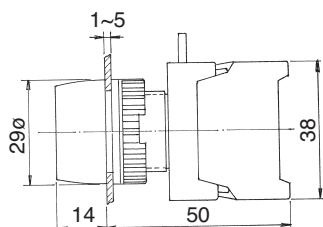
GEB22A-1/O
GEB22A-1/C



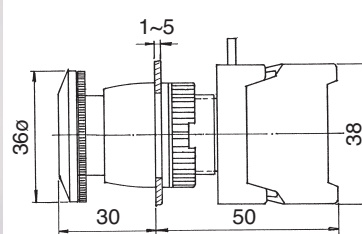
GEB22A-10/C



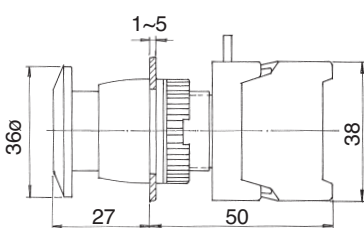
GPF22-10/C



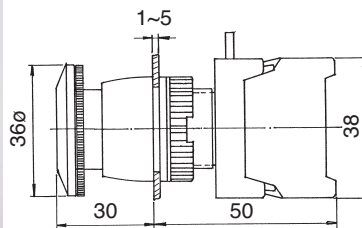
GLEB22-1/C



GEPF22-10/C



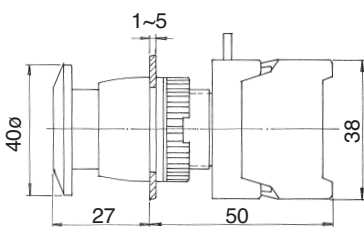
GLEB22-10/C



GEB22-1/O
GEB22-1/C



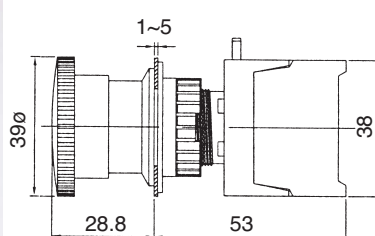
GEB22-10/C



LMB22-1/C

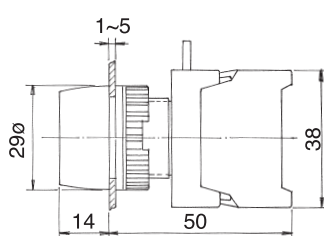
LMB22-10/C

Latching stop

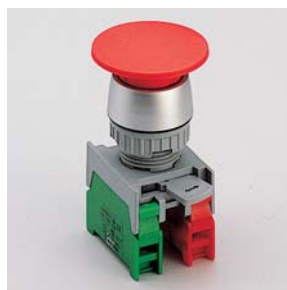


PUSH BUTTON SWITCHES, IP65

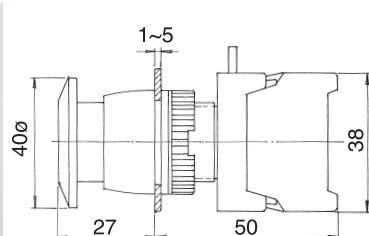
PBF22-1/O(N/O)
PBF22-1/C(N/C)



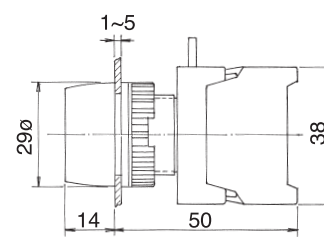
EB22-1/O
EB22-1/C



EB22-10/C



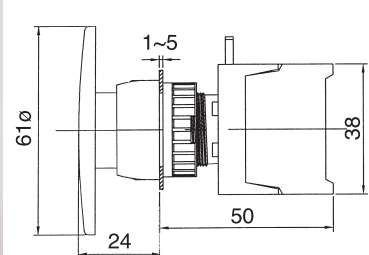
PBF22-10/C



BEB22-1/O
BEB22-1/C



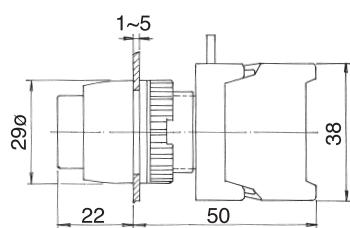
BEB22-10/C



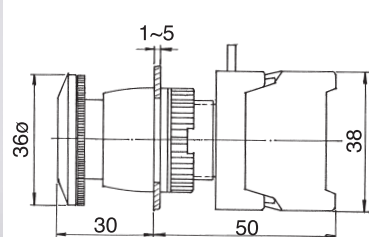
PBL22-1/O
PBL22-1/C



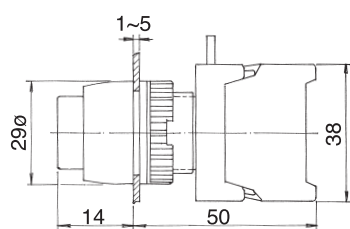
PBL22-10/C



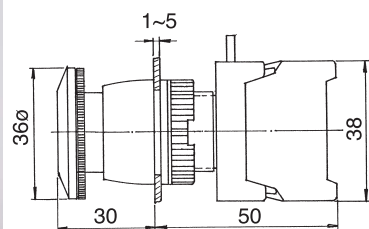
LEB22-1/C Latching



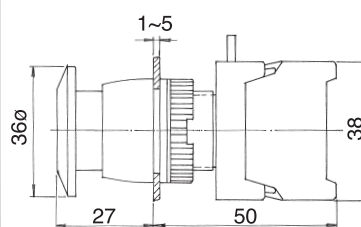
PF22-10/C Push ON-Push OFF



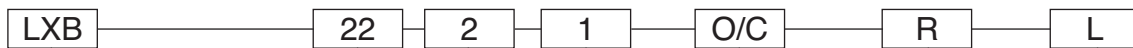
LEB22-10/C Latching



EPF22-10/C Push ON-Push OFF



ILLUMINATED PUSH BUTTON SWITCHES,IP65

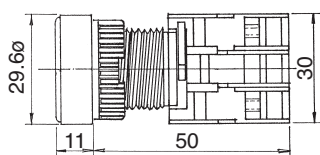


Type	Mounting hole	Voltage	No. of contact	Type of contact	Lens colour	Bulb type
LBF,LXB:GLBF,PFL,GPFL:Flat head LBS:Square head	22 : 22ø 30 : 30ø	1:110V 2:220V	1 2	O: N/O(a) C: N/C(b)	• R: Red • G: Green • Y: Yellow • BL: Blue • W: White	L:Led F:Filament bulb
LBL,LXL:Long head LXG:Guard head LXLS:Long head square LXGS:Guard head square		3:380V 4:440V 5:6V 6:12V 7:24V	3 4	O/C: N/O+N/C 1a+1b		N:Neon lamp
EBL,LXE EPFL:Mushroom head 40ø BLXE:Mushroom head 60ø LXES:Mushroom head square 40ø						

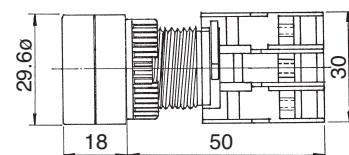
LXB22-1/O
LXB22-1/C



LXB22-1O/C



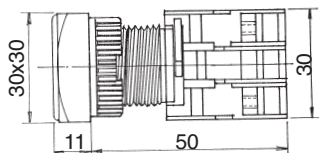
LXG22-1/O



LBS22-1/O
LBS22-1/C



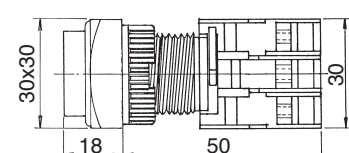
LBS22-1O/C



LXLS22-1/O
LXLS22-1/C



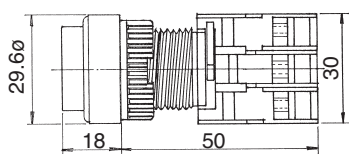
LXLS22-1O/C



LXL22-1/O
LXL22-1/C



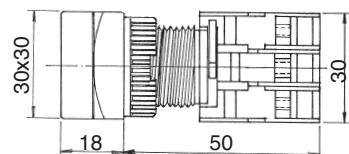
LXL22-1O/C



LXGS22-1/O
LXGS22-1/C



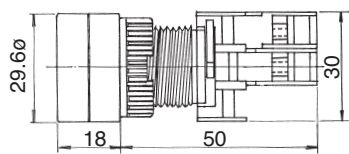
LXGS22-1O/C



LXG22-1/O
LXG22-1/C



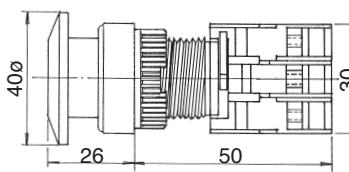
LXG22-1O/C



LXE22-1/O
LXE22-1/C



LXE22-1O/C



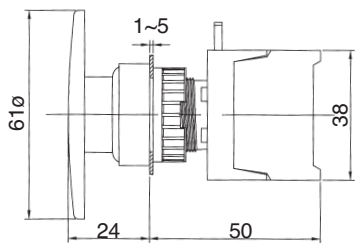
ILLUMINATED PUSH BUTTON SWITCHES, IP65



BLXE22-1/O
BLXE22-1/C



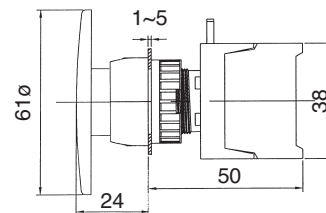
BLXE22-1/O/C



GEBL22A-1/O
GEBL22A-1/C



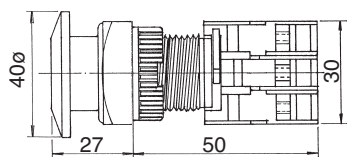
GEBL22A-1/O/C



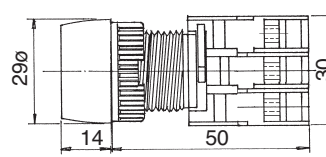
LXES22-1/O
LXES22-1/C



LXES22-1/O/C



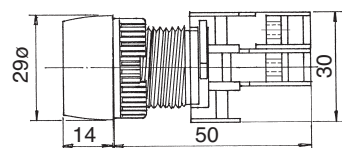
GPFL22-10/C Push ON-Push OFF



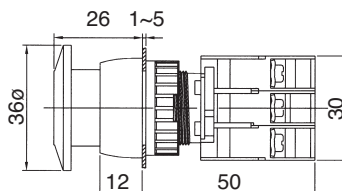
GLBF22-1/O
GLBF22-1/C



GLBF22-1/O/C



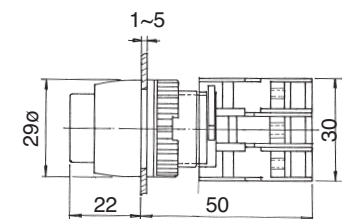
GEPFL22-10/C Push ON-Push OFF



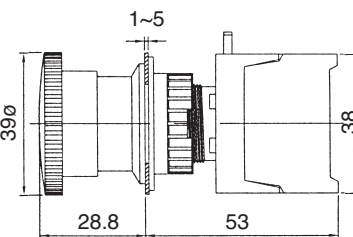
GLBL22-1/O
GLBL22-1/C



GLBL22-1/O/C



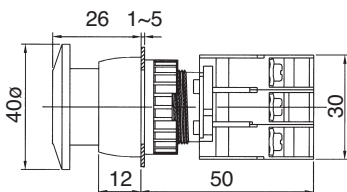
MBL22-1/C Illuminated latching stop



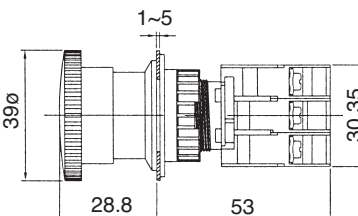
GEBL22-1/O
GEBL22-1/C



GEBL22-1/O/C



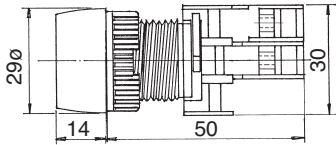
MBL22-10/C Illuminated latching stop



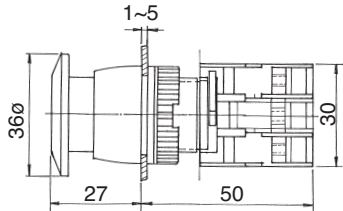
ILLUMINATED PUSH BUTTON SWITCHES,IP65



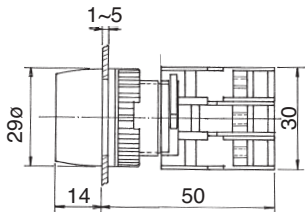
LBF22-1/O Illuminated
LBF22-1/C



EPFL22-10/C
Push ON-Push OFF Illuminated

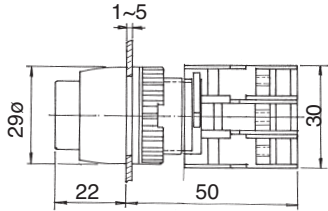


LBF22-10/C Illuminated



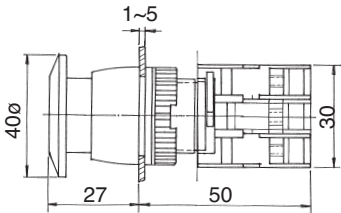
LBL22-1/O
LBL22-1/C

LBL22-10/C Illuminated

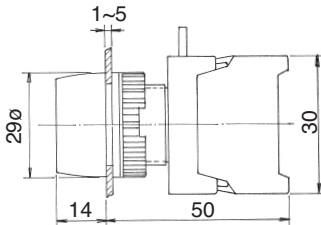


EBL22-1/O
EBL22-1/C

EBL22-10/C Illuminated



PFL22-10/C
Push ON-Push OFF Illuminated



SELECTOR SWITCHES, LEVER
SWITCHES, IP65

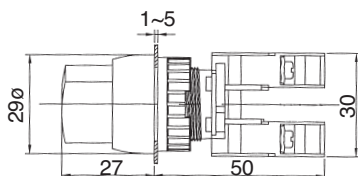


CS	22	2	1	O/C	BK
Type	Mounting hole	Position	No. of contact	Type of contact	Lens colour
CS, GCS: Knob type LCS, GLCS: Long Knob RS, GRS: Long & spring return LRS, GLRS: Long knob spring return LS, GLS: Lever type LUS, GLUS: Lever & spring return KS, GKS: Key type drawable KSN, GKSN: Key type Non draw KSR, GKSR: Key type spring return	22 : 22ø 30 : 30ø	2:2 Position 3:3 Position	1 2 3 4	O: 1/O, N/O 1a C: 1/C N/C 1b O/C: N/O+N/C 1a+1b 2/O: 2N/O 2a 2/C: 2N/C 2b	<ul style="list-style-type: none"> • R: Red • G: Green • Y: Yellow • BK: Black

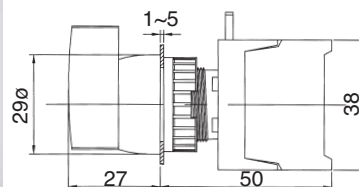
2 Position	2 Position	3 Position	2 Position Spring return	3 Position Spring return	3 Position rreturn one side

CS22-1/O , 0-1
CS22-1/C , 1-0

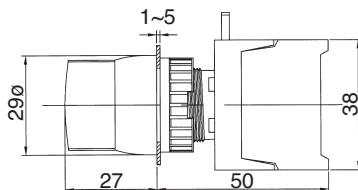
CS22-10/C 1-2



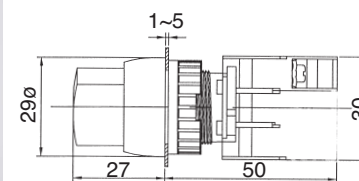
LCS22-2/O , 2N/O 1-0-2



CS22-2/O , 2N/O 1-0-2

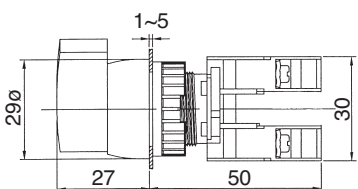


RS22-1/O 0-1 Spring return
RS22-1/C 1-0

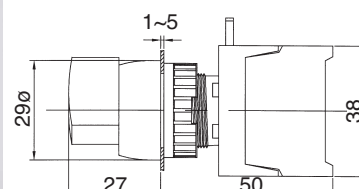


LCS22-1/O , 0-1
LCS22-1/C , 1-0

LCS22-10/C 1-2

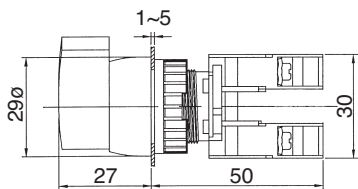


LRS22-1/O 0-1 Spring return
LRS22-1/C 1-0

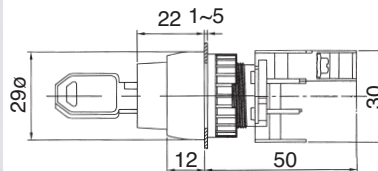


LEVER AND KEY SELECTOR SW.IP65

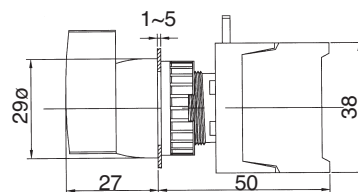
LRS22-10/C Spring return 1←2



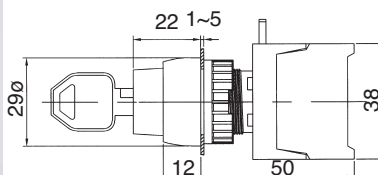
KS22-1/O 2 Position Drawable 0-1
KSN22-1/O 2 Position Non-Drawable 0-1



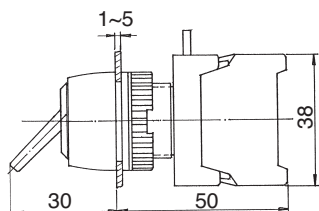
LRS22-2/O Spring return 1→0←2



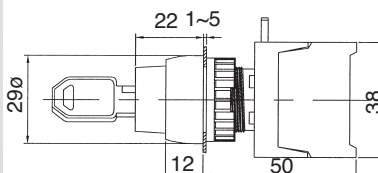
KS22-10/C 2 Position Drawable 1-2
KSN22-10/C 2 Position Non-Drawable 1-2



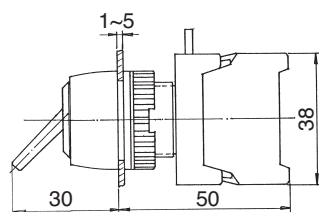
LS22-1/O 0-1 Lever sw
LS22-1/C 1-0



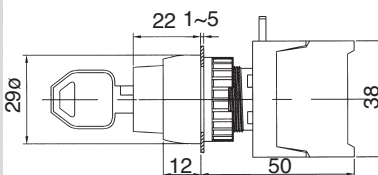
KSR22-10/C 1←2 Spring return



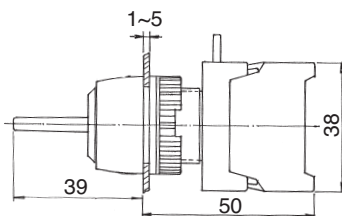
LS22-10/C 1-2 Lever sw
LS22-2/O 1-2



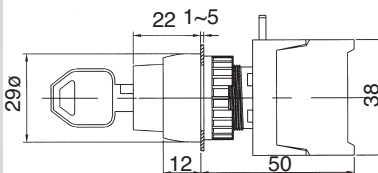
KS22-2/O 3 Position 1-0-2 Drawable
KSN22-2/O 3 Position 1-0-2 Non-Drawable



LUS22-2/O 1→0←2 Spring return, Lever sw
LUS22-2/C 1→0←2 Spring return, Lever sw

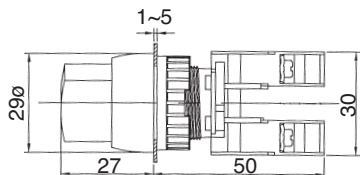


KSR22-2/O 3 Position 1→0←2 Spring return
KSR22A-2/O 1→0-2, KSR22B-2/O 1-0←2

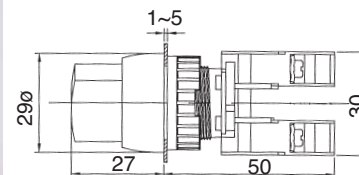


SELECTOR SWITCHES,IP65

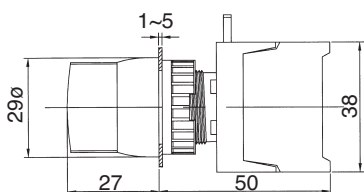
GCS22-1/O N/O,0-1 , GCS22-1O/C , 1-2
GCS22-1/C N/C,1-0



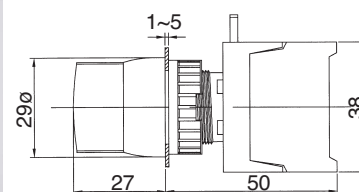
GRS22-1O/C , 1 ← 2 , Spring return



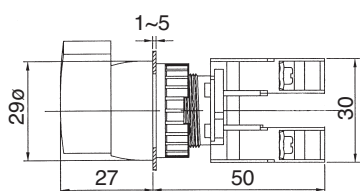
GCS22-2/O , 1-0-2



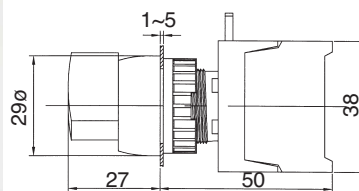
GRS22-2/O , 1 → 0 ← 2 , Spring return
GRS22A-2/O , 1 → 0-2 , GRS22B-2/O 1-0 ← 2



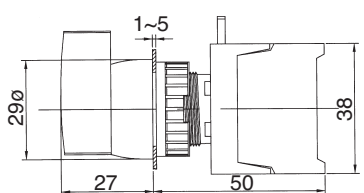
GLCS22-1/O , N/O , 0-1 , GLCS22-1O/C , 1-2
GLCS22-1/C , N/C , 1-0



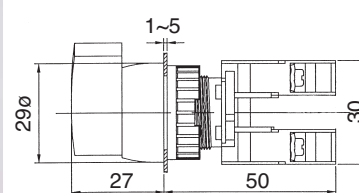
GLRS22-1/O , 0 ← 1 , Spring return
GLRS22-1/C , 1 ← 0



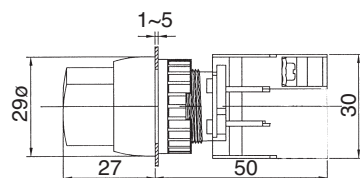
GLCS22-2/O , 1-0-2



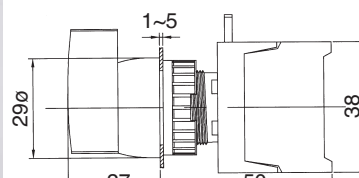
GLRS22-1O/C , 1 ← 2 , Spring return



GRS22-1/O , 0 ← 1
GRS22-1/C , 1 ← 0

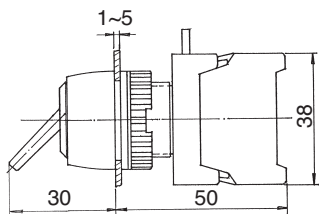


GLRS22-2/O , 1 → 0 ← 2 Spring return
GLRS22A-2/O , 1 → 0-2 , GLRS22B-2/O , 1-0 ← 2

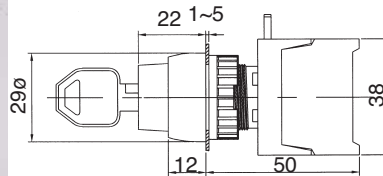


LEVER SW AND KEY SWITCHES, IP65

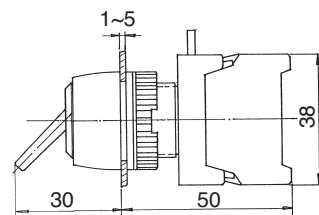
GLS22-1/O , 0-1 Lever sw
GLS22-1/C , 1-0



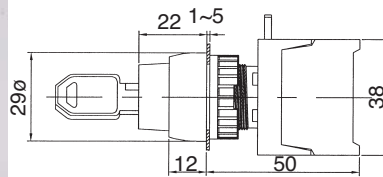
GKS22-2/O , 1-0-2 , Drawable
GKSN22-2/O , 1-0-2 , Non-drawable



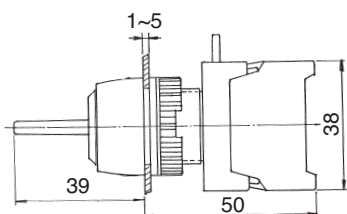
GLS22-1O/C , 1-2 Lever sw
GLS22-2/O , 1-2



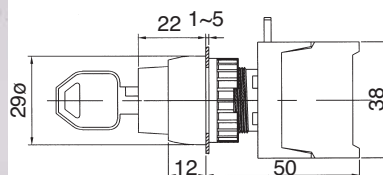
GKSR22-2/O , 1-0-2



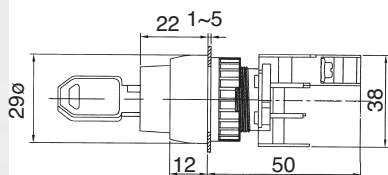
GLUS22-2/O 1-0-2 , Spring return Lever sw
GLUS22-2/C 1-0-2



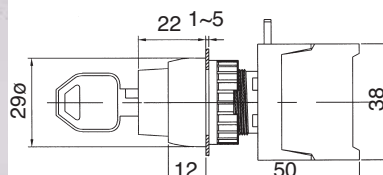
GKSR22A-2/O , 1-0-2 , Spring return one side



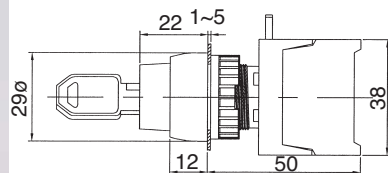
GKS22-1/O , 0-1 , Drawable
GKSN22-1/O , 0-1 , Non-drawable



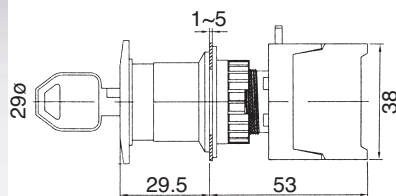
GKSR22B-2/O , 1-0-2 , Spring return one side



GKS22-1O/C , 1-2 , Drawable
GKSN22-1O/C , 1-2 , Non-drawable



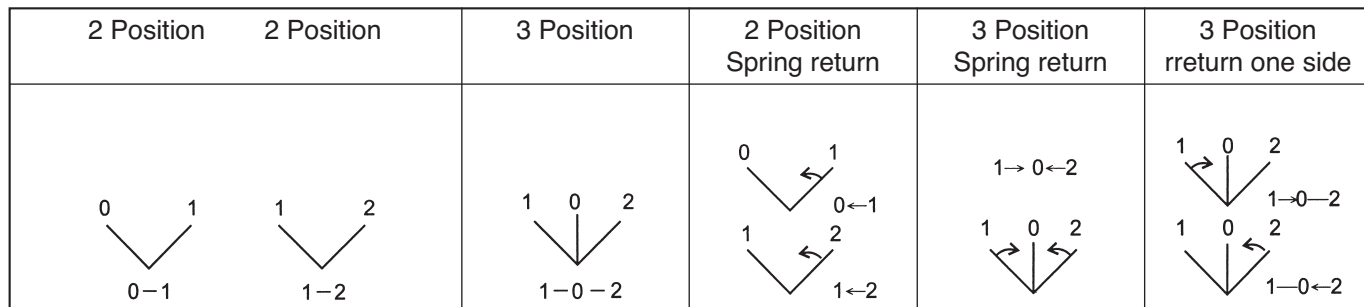
EKS22-1/O Emergency stop key switch
EKS22-1O/C



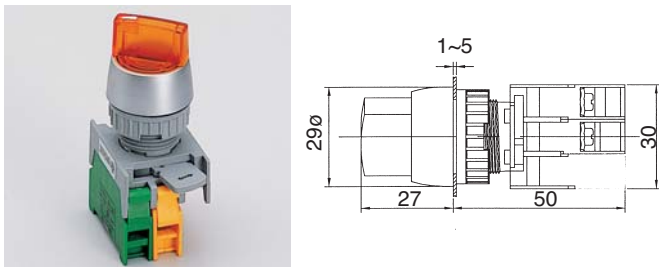
ILLUMINATED SELECTOR SWITCHES 22ø,IP65



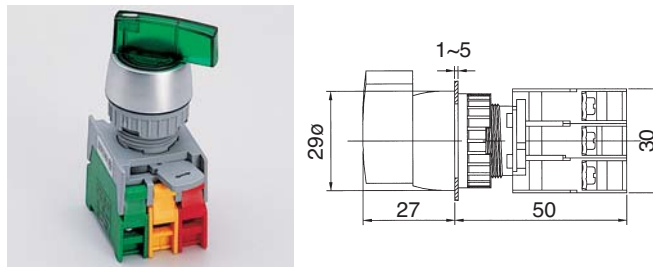
Type	Mounting hole	Voltage	Position	No.of contact	Type of contact	Colour	Bulb type
SL,GSL:Knob type LSL,GLSL:Long Knob SRL,GSRL:Knob&spring return LSRL,GLSRL:Long Knob&spring return	22 : 22ø 25 : 25ø 30 : 30ø	1:110V 2:220V 3:380V 4:440V 5:6V 6:12V 7:24V	2:2 Position 0-1 1-2 3:3 Position 1-0-2	1 2 3 4	O: N/O(a) C: N/C(b) O/C: N/O+N/C 1a+1b	i : R: Red i : G: Green i : Y: Yellow i # W: White	L:Led F:Filament bulb N:Neon lamp



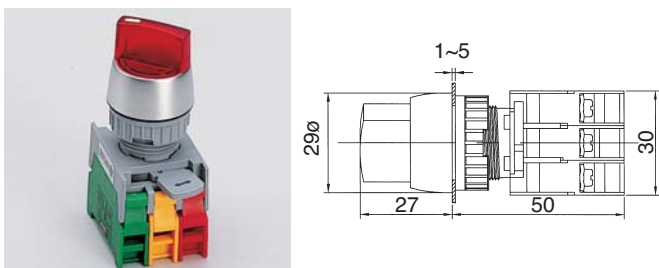
SL22-1/O , N/O , 0-1 SL22-1/C , N/C , 1-0



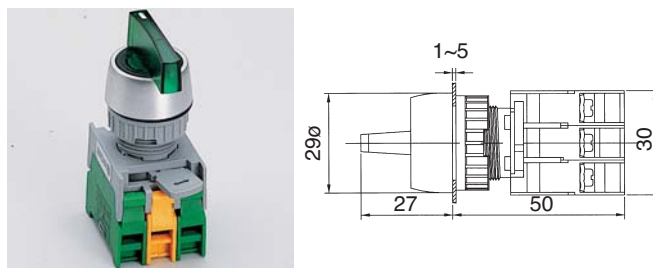
LSL22-1O/C , N/O+N/C , 1-2



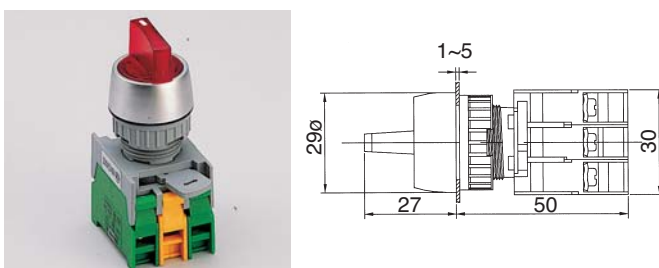
SL22-1O/C , N/O+N/C , 1-2



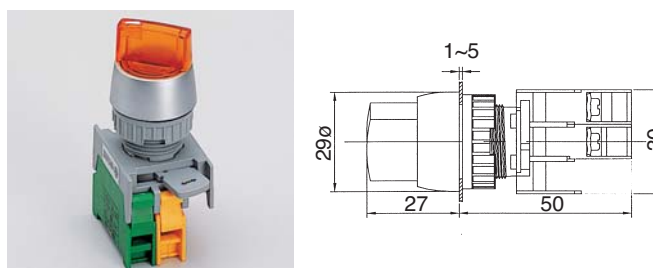
LSL22-2/O , 2N/O , 1-0-2



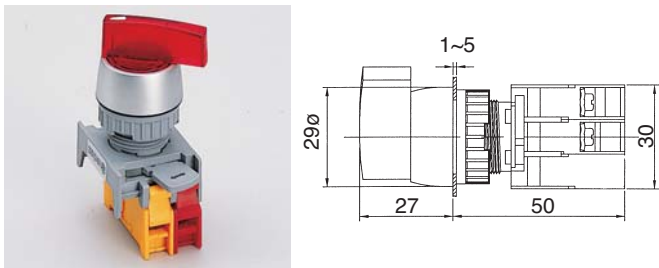
SL22-2/O , 2N/O , 1-0-2



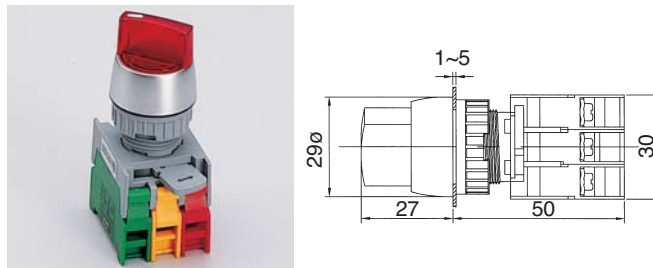
SRL22-1/O , 0-1 SRL22-1/C , 1-0



LSL22-1/O , N/O , 0-1 LSL22-1/C , N/C , 1-0



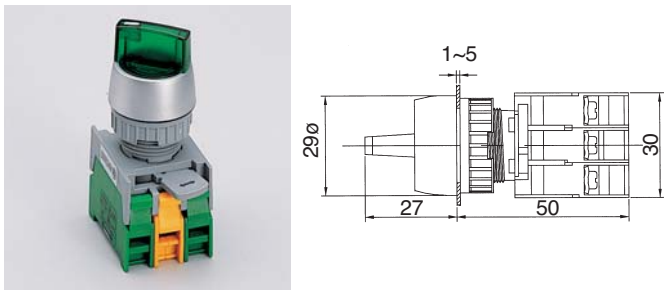
SRL22-1O/C , N/O+N/C , 1-2



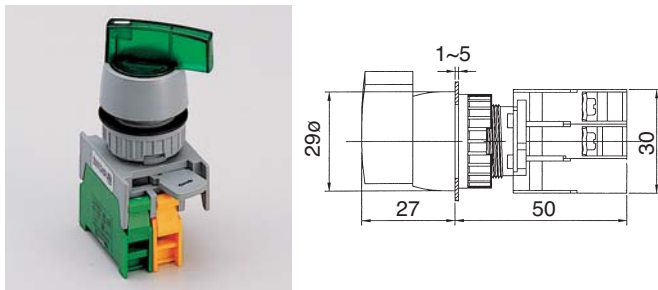
ILLUMINATED SELECTOR SWITCHES 22ø,IP65



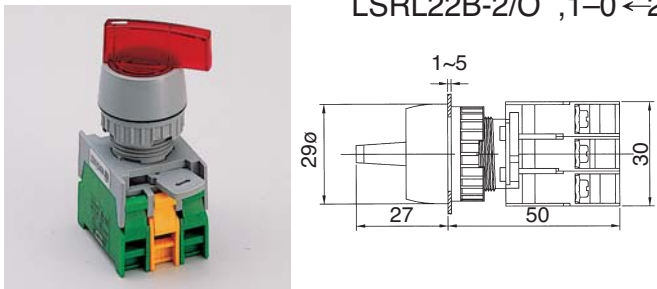
SRL22-2/O , 2N/O 1→0←2
SRL22A-2/O , 1→0-2 , SRL22B-2/O , 1-0←2



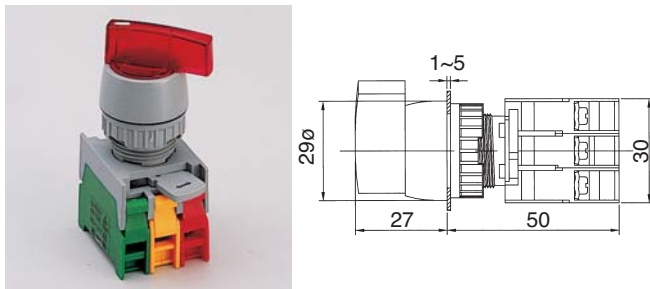
GLSL-1/O 0-1 , GLSL22-1/C , 1-0



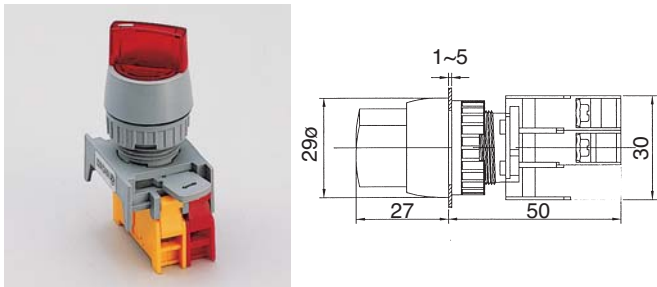
LSRL22-1/O , 0←1 , LSRL22-1O/C , 1←2
LSRL22-2/O , 1→0←2 , LSRL22A-2/O , 1→0-2
LSRL22B-2/O , 1-0←2



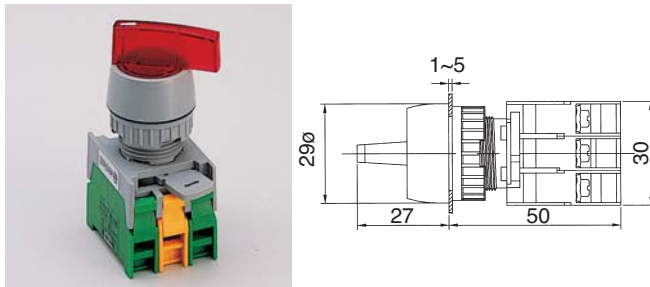
GLSL22-1O/C N/O+N/C 1-2



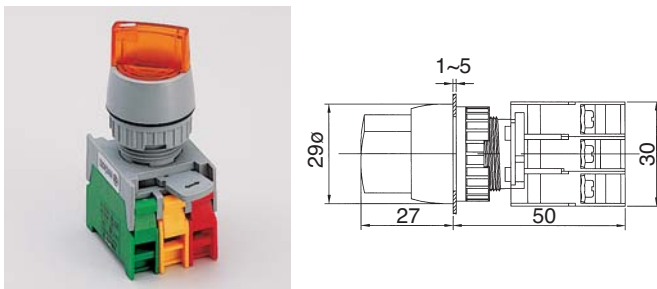
GSL22-1/O 0-1 , N/O
GSL22-1/C 1-0 , N/C



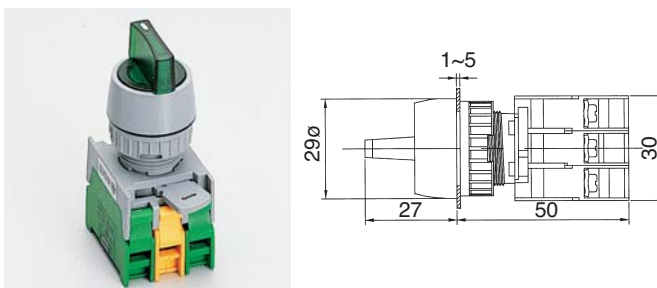
GLSL22-2/O , 2N/O , 1-0-2



GSL22-1O/C N/O+N/C 1-2



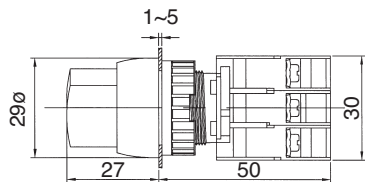
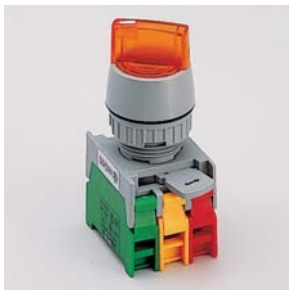
GSL22-2/O , 2N/O , 1-0-2



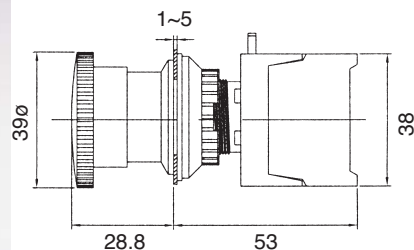
ILLUMINATED SELECTOR SWITCHES 22ø,IP65



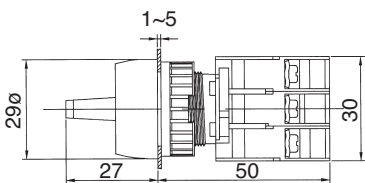
GSRL22-1/O , 0←1 , GSRL22-1/C , 1←0
GSRL22-10/C , 1←2



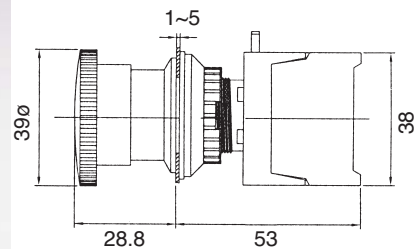
LMB 30-1/C 30mm mounting hole latching stop



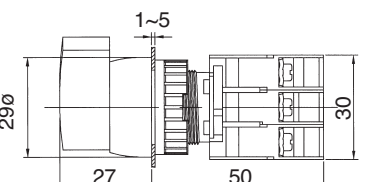
GSRL22-2/O , 2N/O , 1→0←2
GSRL22A-2/O , 1→0←2 , GSRL22B , 1-0←2



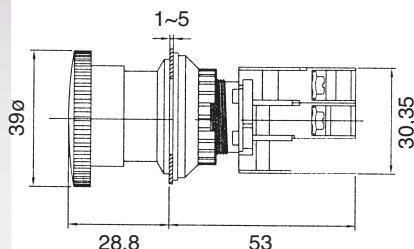
LMB 30-10/C 30mm mounting hole latching stop



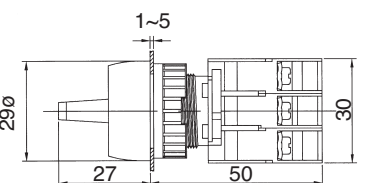
GLSRL22-1/O , 0←1
GLSRL22-10/C , 1←2



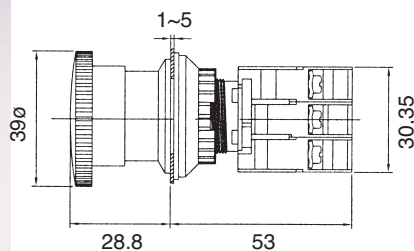
MBL 30-1/C Illuminated latching stop
mounting hole: 30mm dia.



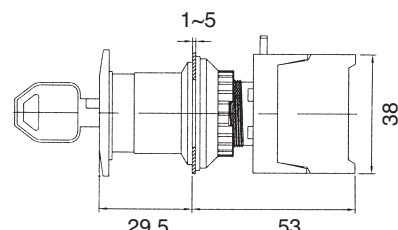
GLSRL22-2/O , 2N/O , 1→0←2
GLSRL22A-2/O , 1→0←2 , GLSRL22B-2/O , 1-0←2



MBL 30-10/C Illuminated latching stop
mounting hole: 30mm dia.



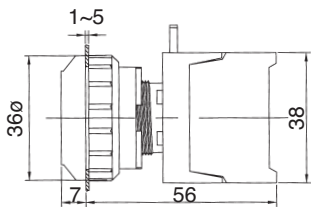
EKS 30-1/C Emergency stop key switch
EKS 30-10/C



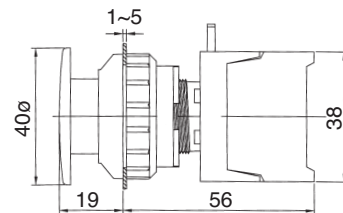
mounting hole: 30mm dia.

PUSH BUTTON SWITCHES 30ø,IP65

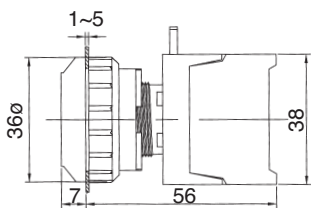
XB30-1/O
XB30-1/C



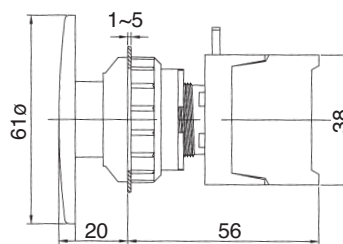
XE30-1/C
XE30-1/O/C



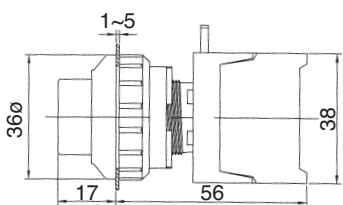
XB30-1O/C



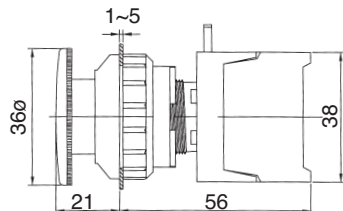
BXE30-1/C
BXE30-1O/C



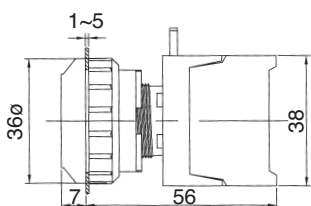
XL30-1/O XL30-1O/C
XL30-1/C



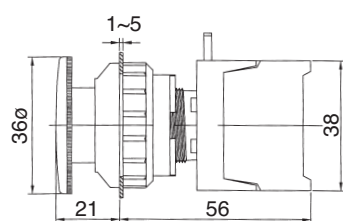
XLEB30-1/C Latching STOP



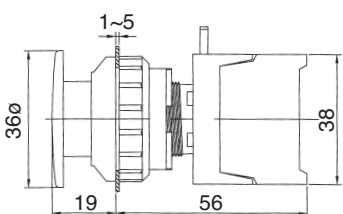
PFL30-1O/C Push ON-Push OFF



XLEB30-1O/C Latching STOP

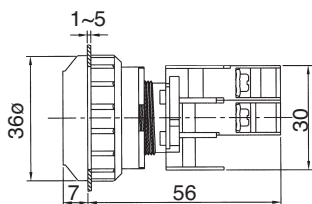


EPFL30-1O/C Push ON-Push OFF

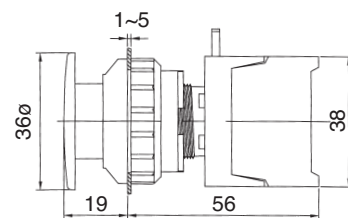


ILLUMINATED PUSH BUTTON 30ø,IP65

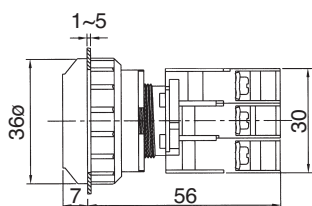
LXB30-1/O
LXB30-1/C



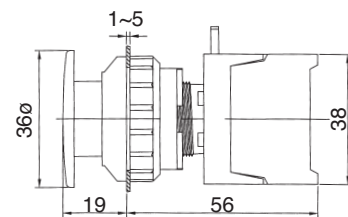
LXE30-1/O
LXE30-1/C



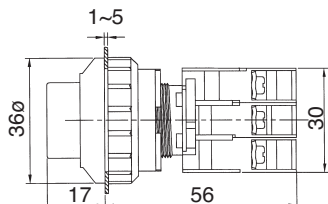
LXB30-1O/C



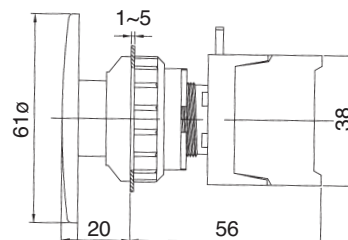
LXE30-1O/C



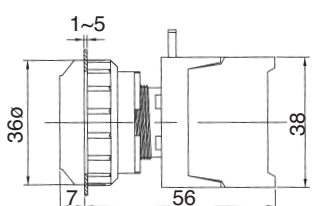
LXL30-1/O LXL30-1O/C
LXL30-1/C



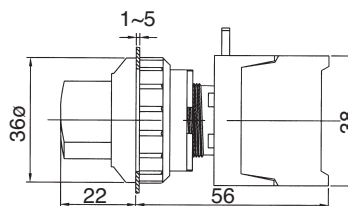
BLXE30-1/O BLXE30-1O/C
BLXE30-1/C



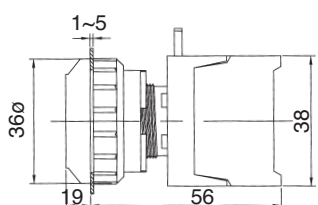
PFL30-1O/C Push ON-Push OFF



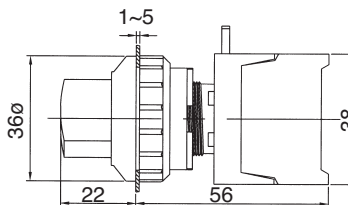
SS30-1/O 0-1
SS30-1/C 1-0



EPFL30-1O/C Push ON-Push OFF



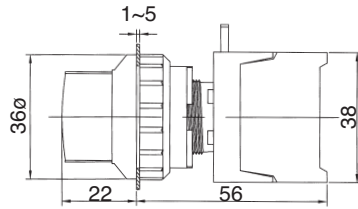
SS30-1O/C 1-2



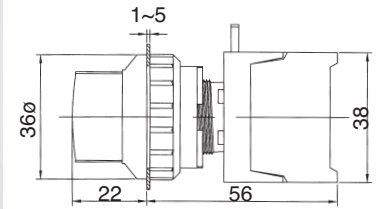
SELECTOR SWITCHES,KEY
SELECTOR SWITCHES 30ø,IP65



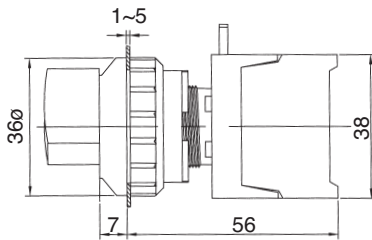
SS30-2/O 1-0-2



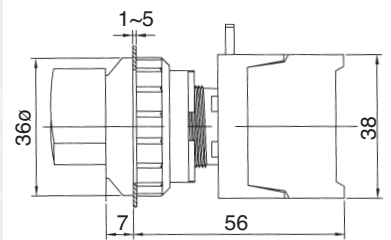
SR30-2/O , 1→0←2 , Spring return
SR30A-2/O , 1→0-2 , Spring return one side



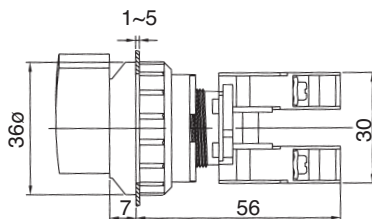
LSS30-1/O , 0-1
LSS30-1/C , 1-0



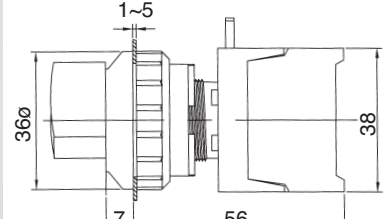
LSR30-1/O , 0←1 , Spring return
LSR30-1/C , 1←0 , Spring return



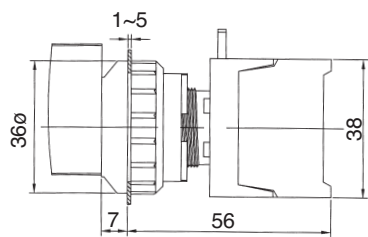
LSS30-10/C , 1-2



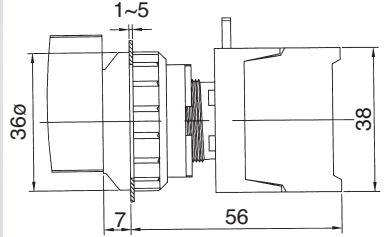
LSR30-10/C , 1←2 , Spring return



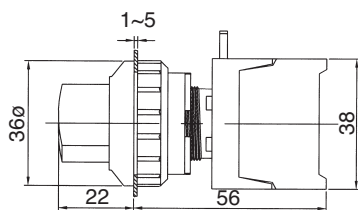
LSS30-2/O , 1-0-2



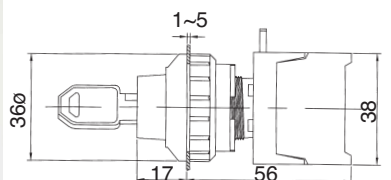
LSR30-2/O , 1→0←2 , Spring return
LSR30-2/O , 1→0-2 , Spring return one side



SR30-1/O , 0←1 , SR30-10/C 1←2
SR30-1/C , 1←0 , Spring return



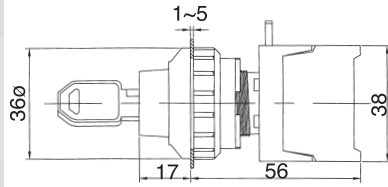
KS30-1/O 0-1
KS30-1/C 1-0



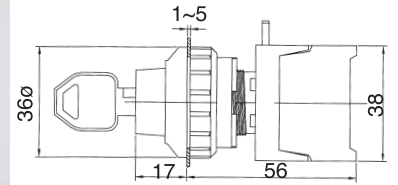
ILLUMINATED SELECTOR SWITCHES
KEY SELECTOR SWITCHES 30ø,IP65



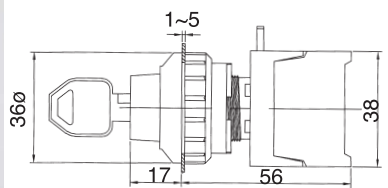
KS30-10/C , 1-2 , Drawable
KSN30-10/C , 1-2 , Non-drawable



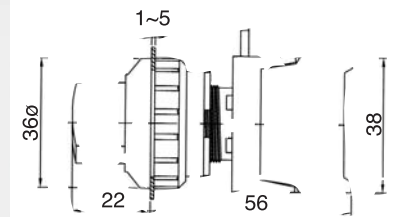
KSR30A-2/O , 1→0-2 , Spring return one side



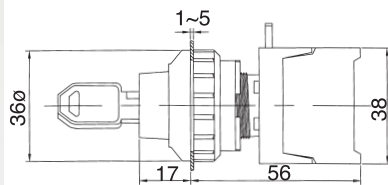
KS30-2/O , 1-0-2 , Drawable
KSN30-2/O , 1-0-2 , Non-drawable



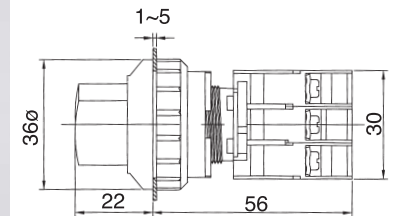
SL30-1/O , 0-1
SL30-1/C , 1-0



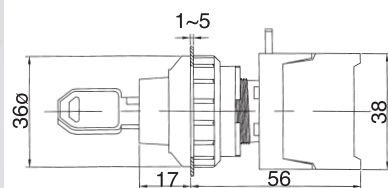
KSR30-1/O , 0←1 , Spring return
KSR30-1/C , 1←0 , Spring return



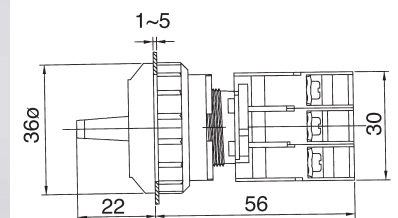
SL30-10/C , 1-2



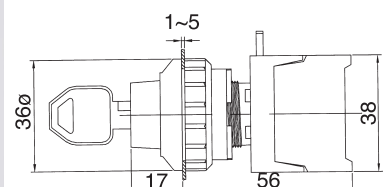
KSR30-10/C , 1←2 , Spring return



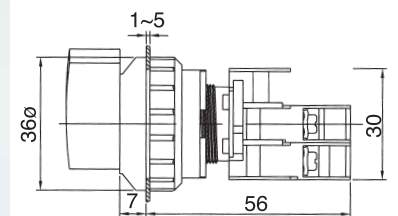
SL30-2/O , 1-0-2



KSR30-2/O , 1→0←2 , Spring return



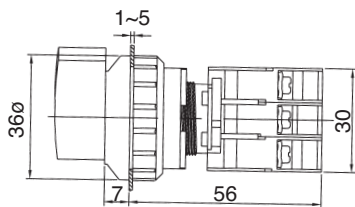
LSL30-1/O , 0-1
LSL30-1/C , 1-0



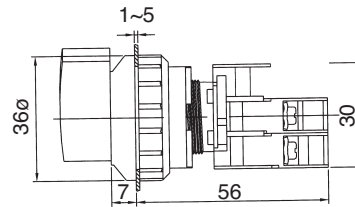
ILLUMINATED SELECTOR SWITCHES 30ø,IP65



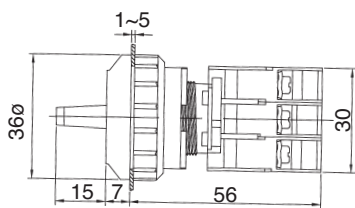
LSL30-1O/C , 1-2



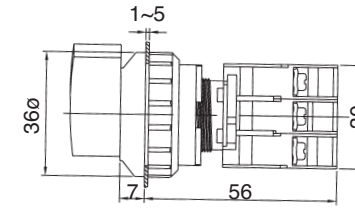
LSRL30-1/O , 0←1
LSRL30-1/C , 1←0



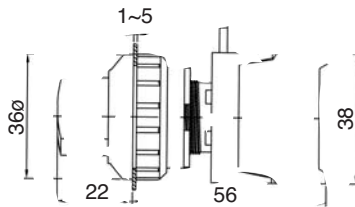
LSL30-2/O , 1-0-2



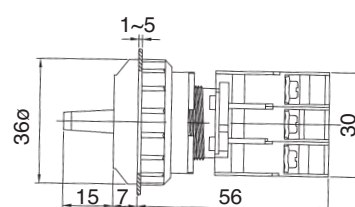
LSRL30-1O/C , 1←2



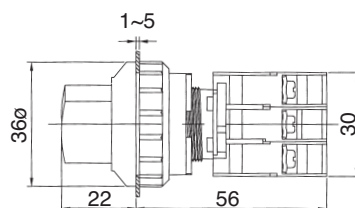
SRL30-1/O , 0←1 , Spring return
SRL30-1/C , 1←0 , Spring return



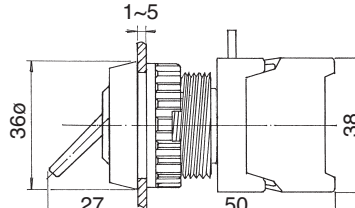
LSRL30-2/O , 1→0←2
LSRL30A-2/O , 1→0-2



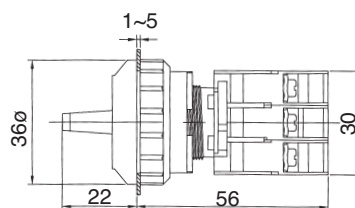
SRL30-1O/C , 1←2



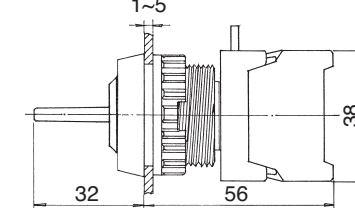
LS30-1/O , 0-1 , LS30-1O/C , 1-2
LS30-2/O , 0-1



SRL30-2/O , 1→0←2
SRL30A-2/O , 1→0-2



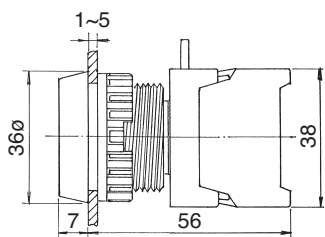
LUS30-2/O , 1→0←2 , Spring return
LUS30-2/C , 1→0←2 , Spring return



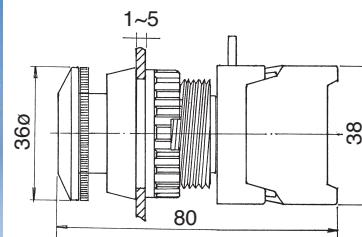
ILLUMINATED PUSH BUTTON SWITCHES
PUSH BUTTON SWITCHES 30ø,IP65



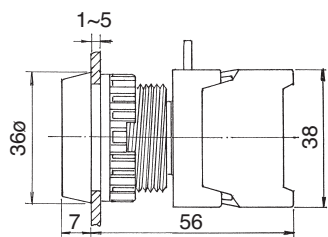
PBF30-1/O
PBF30-1/C



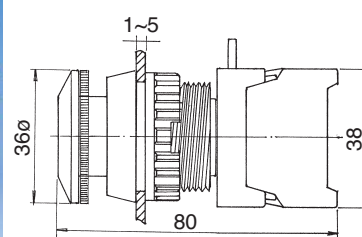
LEB30-1/C , Latching (Reset)



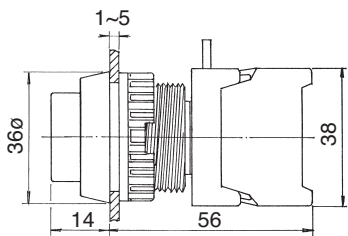
PBF30-1O/C



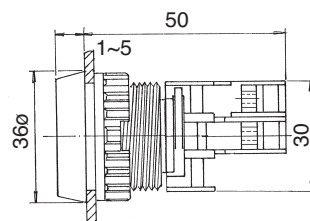
LEB30-1O/C , Latching (Reset)



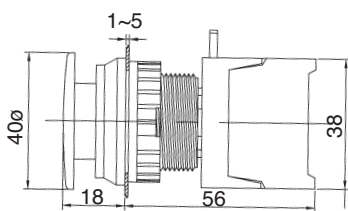
PBL30-1/O PBL30-1O/C
PBL30-1/C



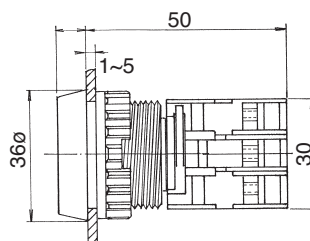
LBF30-1/O , Illuminated
LBF30-1/C



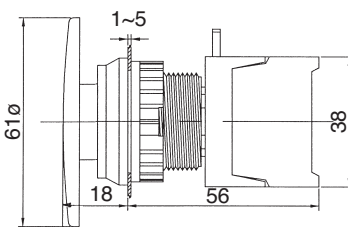
EB30-1/C
EB30-1O/C



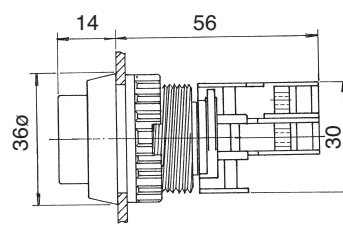
LBF30-1O/C , Illuminated



BEB30-1/C
BEB30-1O/C



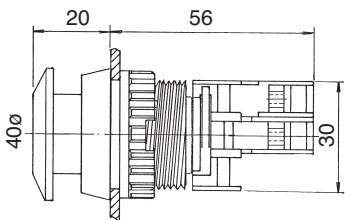
LBL30-1/O , LBL30-1O/C
LBL30-1/C



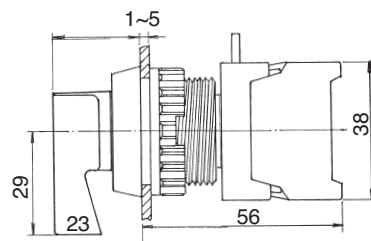
ILLUMINATED PUSH BUTTON
SELECTOR SWITCHES 30ø,IP65



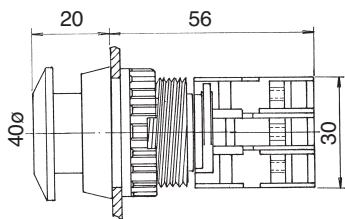
EBL30-1/C



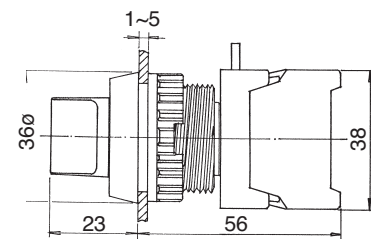
LCS30-2/O , 1-0-2



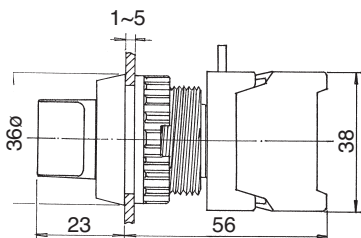
EBL30-1O/C



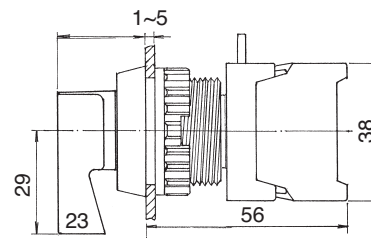
RS30-1/O , 0←1 , RS30-1O/C , 1←2
RS30-1/C , 1←0



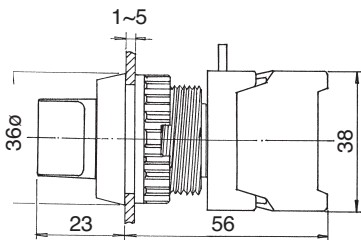
CS30-1/O , 0-1 , CS30-1O/C , 1-2
CS30-1/C , 1-0



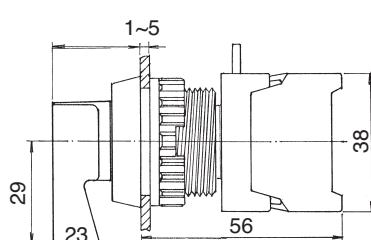
LRS30-1/O , 0←1 , LRS30-1O/C , 1←2
LRS30-1/C , 1←0



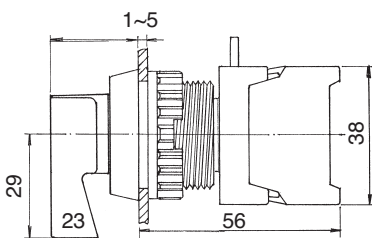
CS30-2/O , 1-0-2



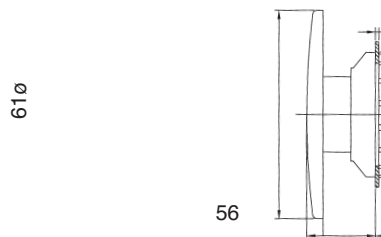
LRS30-2/O , 1→0←2



LCS30-1/O , 0-1 , LCS30-1O/C , 1-2
LCS30-1/C , 1-0



BEBL30-1/C
BEBL30-1O/C



DOUBLE PUSH BUTTON 22ø,25ø,30ø
ILLUMINATED DOUBLE PUSH BUTTON

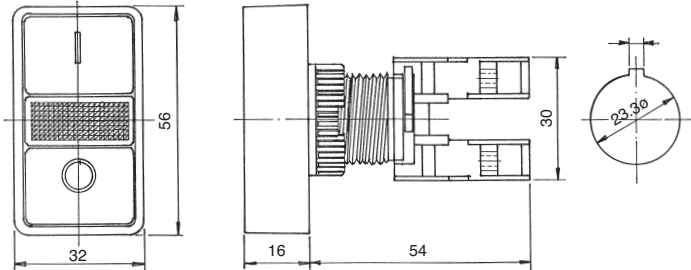
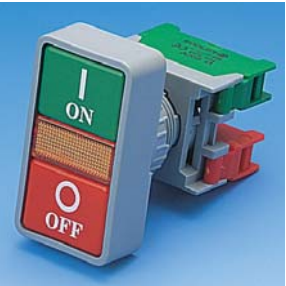


DPB-22N	22	1	10/C
Illuminated type	Mounting hole	Voltage	Type of contact
DPB-22N DPB-25N DPB-30N	22 : 22ø 25 : 25ø 30 : 30ø	1:110V 2:220V 3:380V 4:440V 5:6V 6:12V 7:24V	O: N/O(a) C: N/C(b) O/C: N/O+N/C 1a+1b
Push button			
DPB-22 DPB-25 DPB-30			
DPB	22		10/C

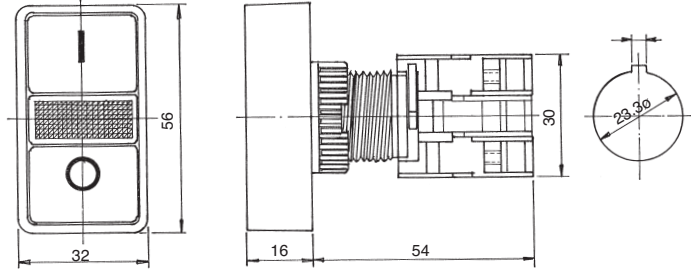
WATER PROOF COVER



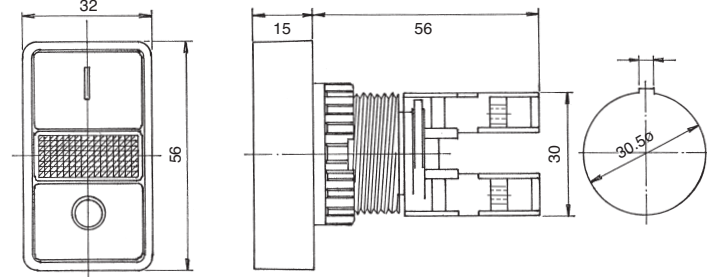
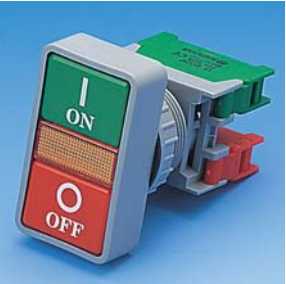
DPB-22
DPB-25



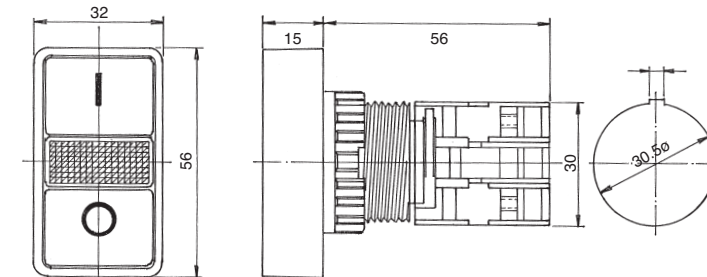
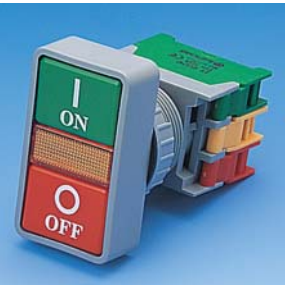
DPB-22N , Illuminated
DPB-25N

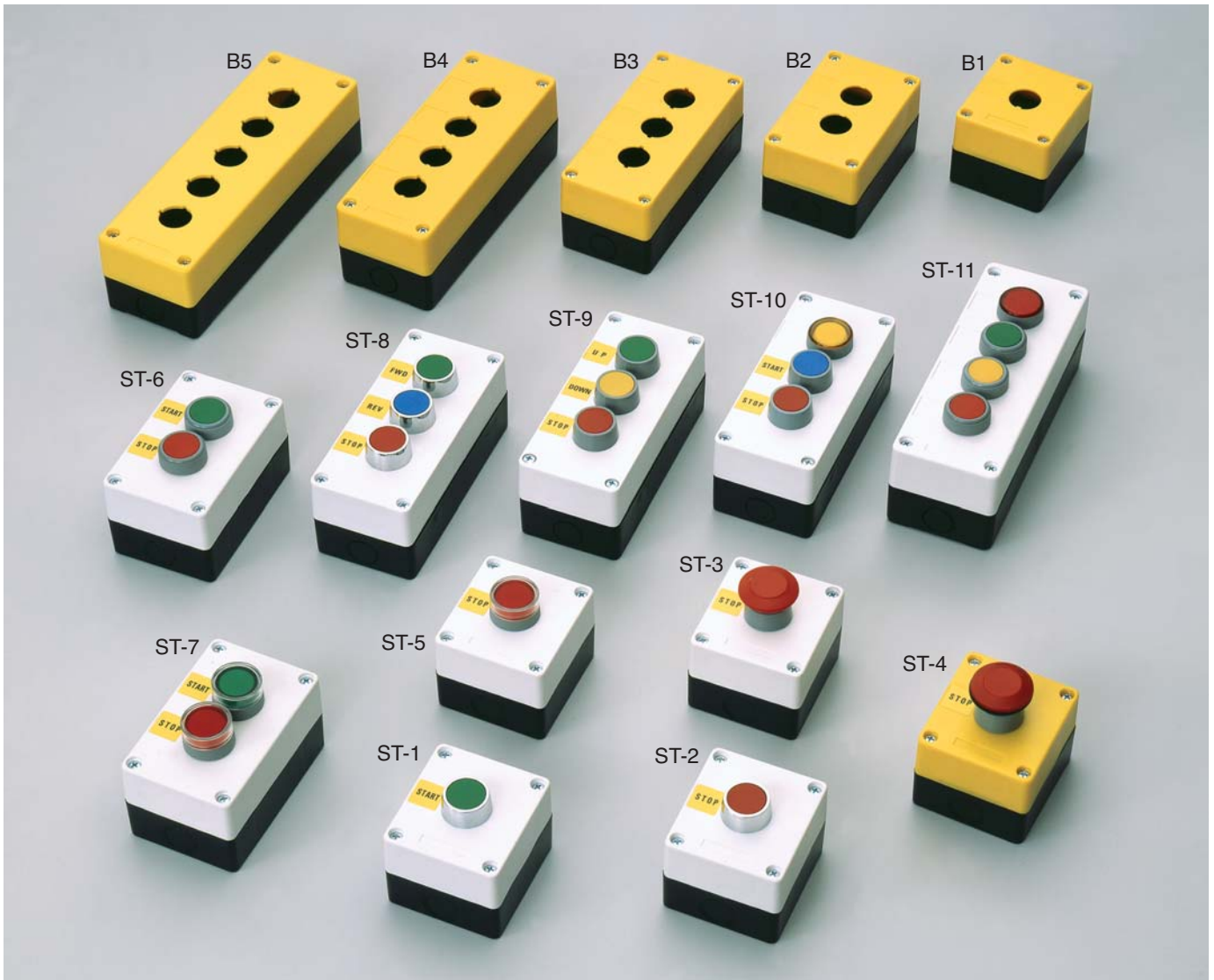


DPB-30N



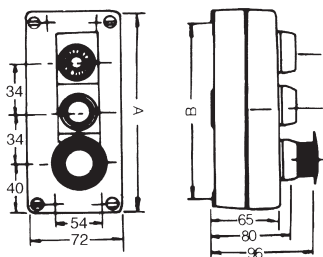
DPB-30N , Illuminated





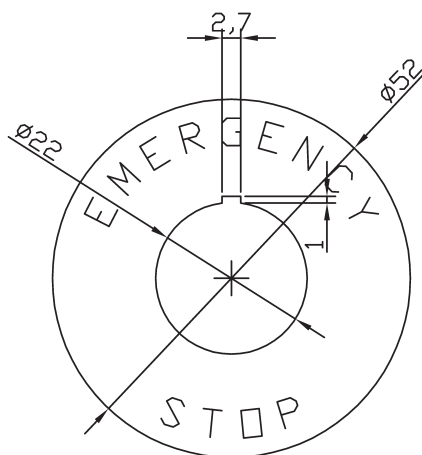
ST-1	1 pushbutton "START"	
ST-2	1 pushbutton "STOP"	
ST-3	1 mushroom Head pushbutton.	
ST-4	1 Latching mushroom head pushbutton "STOP"	
ST-5	1 illuminated push button with neon lamp "STOP"	
ST-6	2 pushbutton "START" "STOP"	

ST-7	2 illuminated pushbutton with neon lamp "START" "STOP"	
ST-8	3 pushbuttons "FORWARD" "REVERSE" "STOP"	
ST-9	3 pushbuttons "UP" "DOWN" "STOP"	
ST-10	1 red pilot light with neon lamp 2 pushbuttons "START" "STOP"	
ST-11	3 illuminated push button with neon lamp	



	A	B
1 Button	78	67
2 Button	111	89
3 Button	151	130
4 Button	185	150
5 Button	222	184

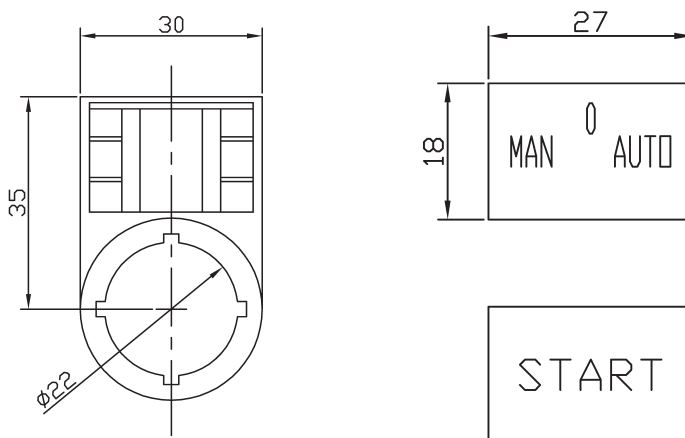
LEGEND PLATE



LEGEND PLATE FRAME



LEGEND PLATE SIZE



LEGEND PLATES

UP 01	START 02	STOP 03	OPEN 04	CLOSE 05	ON 06	OFF 07	FWD 08	REV 09	HIGH 10	LOW 11
OFF ON 21	0 1 22	I II 23	STOP START 24	HIGH LOW 25	MAN AUTO 26	UP DOWN 27				
ON OFF ON 301	MAN OFF AUTO 302	HIGH OFF LOW 303	FOR OFF REV 304	1 0 2 305	UP OFF DOWN 306	1 0 11 307				