

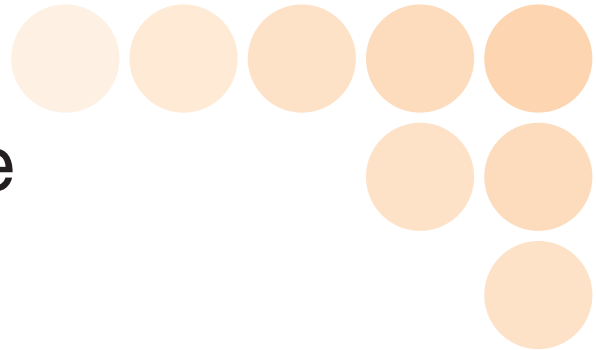


NEW

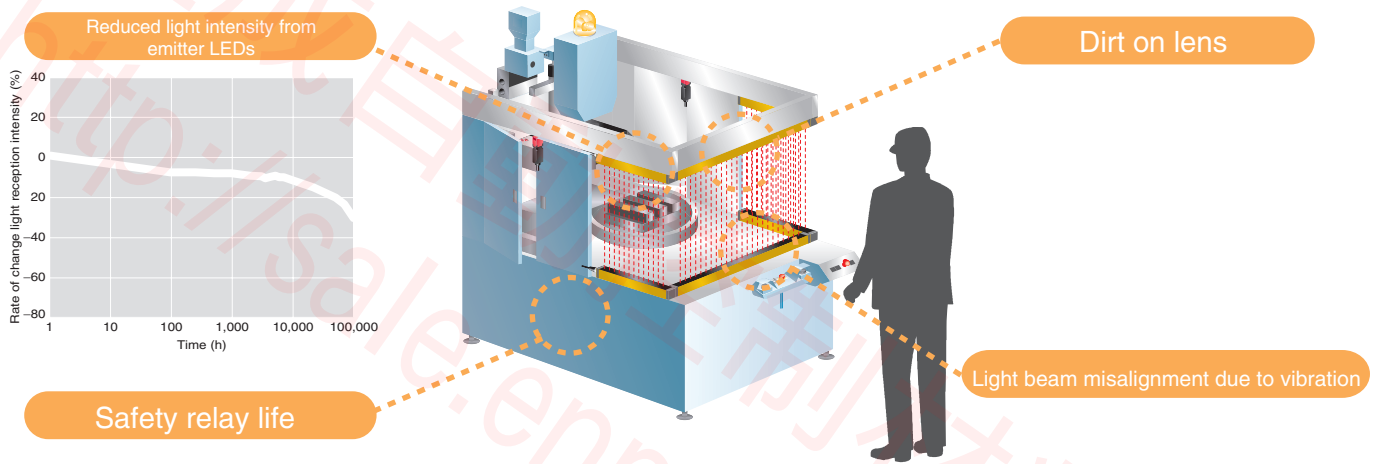
# F3SN Safety Light Curtain Maintenance Tool

## F39-MT11

# Supporting Preventive Maintenance



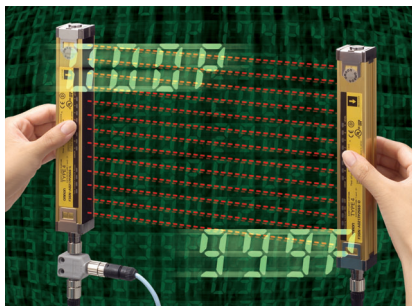
■ Safety Light Curtains support safety. Replacement after failure means you've already lost time.



■ Periodic status checks made with the Maintenance Tool help support stable operation and system safety.

**Digital display of received light intensity**

You can check a digital value to determine whether the intensity of received light has fallen due to a dirty lens, light beam misalignment, or reduced emission power.



**Monitor number of output operations**

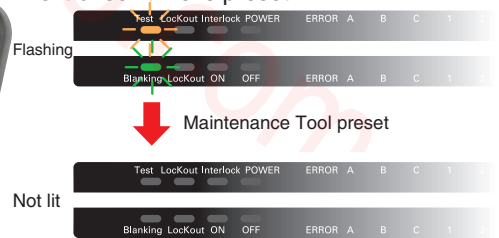
You can check the number of times the contact of the safety relay connected to the light curtain has operated.



F39-MT11  
Maintenance Tool

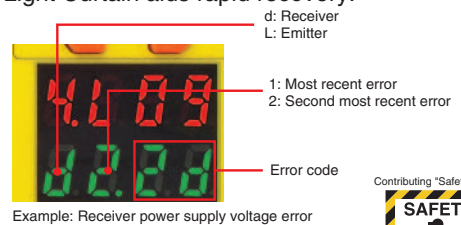
**Accumulate the operated time**

A flashing Safety Light Curtain indicator provides notification when inspection is required. When the inspection has been completed, the indicator turns OFF and the next check time is preset.

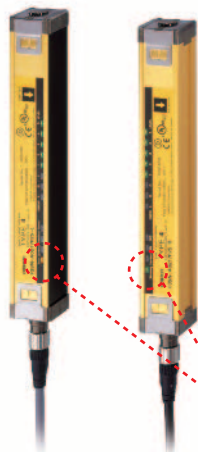


**Error code history display**

More detailed error information than that displayed by the error indicator on the Safety Light Curtain aids rapid recovery.

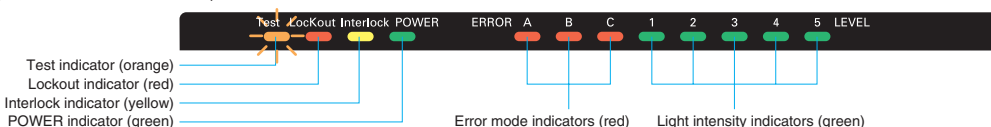


## F3SN Operated Time Notification Function

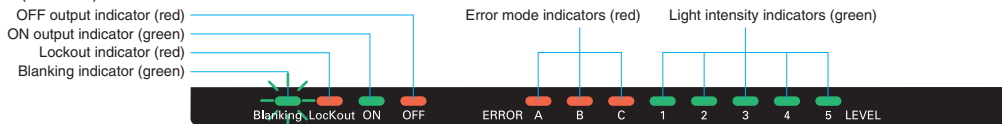


In order to support continuous safe usage of the F3SN-A, F3SN-B and F3SH-A Safety Light Curtains, they have been equipped with a operated time notification function that notifies customers of the timing of periodic checks. A single indicator on the F3SN will flash when the total operated time exceeds 30,000 hours from the start of use, notifying when periodic inspection is required.

### ●Emitter (F3SN-A/F3SN-B/F3SH-A)



### ●Receiver (F3SN-A)



The indicator on the emitter or receiver flashes when the total operated time exceeds 30,000 hours.

## Using the Maintenance Tool when Notification Is Provided

- Confirming that the light intensity has not fallen
- Setting the time for the next periodic inspection
- Stopping the flashing indicator for 30,000 hours of operated time (The Light Safety Curtain has no function for stopping flashing indicators.)

## Connection Method

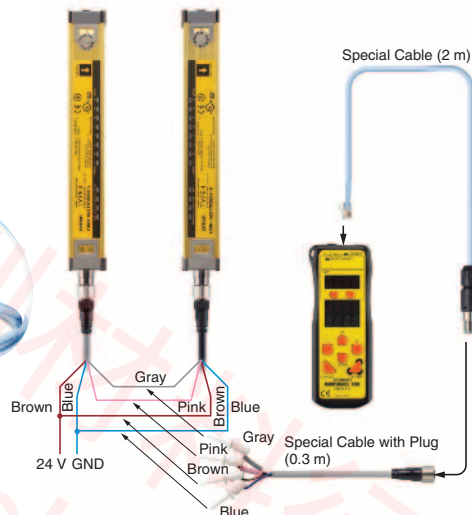
- Connecting a Branching Connector to the Safety Light Curtain



- Connecting a Branching Connector to the F3SP-B1P Control Unit



- Using the Wiring on the Terminal Block (without Using a Branching Connector)



## Ordering Information

Appearance	Model	Applicable Sensors	Accessories
	F39-MT11	F3SN-A-series F3SN-B-series F3SH-A-series F3WN-X-series F3ZN-series	Branching Connector (1), Connector Cap (1), Special Cable (2 m), Special Cable with Plug (0.3 m), Instruction Manual

This document provides information mainly for selecting suitable models. Please read the Instruction Manual carefully for information that the user must understand and accept before purchase, including information on warranty, limitations of liability, and precautions.

### OMRON Corporation Industrial Automation Company

**Application Sensors Division**  
**Sensing Devices and Components Division H.Q.**  
Shiokoji Horikawa, Shimogyo-ku,  
Kyoto, 600-8530 Japan  
Tel: (81)75-344-7068/Fax: (81)75-344-7107

**Regional Headquarters**  
**OMRON EUROPE B.V.**  
Sensor Business Unit,  
Carl-Benz-Str. 4, D-71154 Nufringen,  
Germany  
Tel: (49)7032-811-0/Fax: (49)7032-811-199

**OMRON ELECTRONICS LLC**  
1 East Commerce Drive, Schaumburg, IL 60173  
U.S.A.  
Tel: (1)847-843-7900/Fax: (1)847-843-8568

**OMRON ASIA PACIFIC PTE. LTD.**  
83 Clemenceau Avenue,  
#11-01, UE Square,  
239920 Singapore  
Tel: (65)6835-3011/Fax: (65)6835-2711

**OMRON CHINA CO., LTD. BEIJING OFFICE**  
Room 1028, Office Building,  
Beijing Capital Times Square,  
No. 88 West Chang'an Road,  
Beijing, 100031 China  
Tel: (86)10-8391-3005/Fax: (86)10-8391-3688