

Digital Fiber Amplifier

BR2



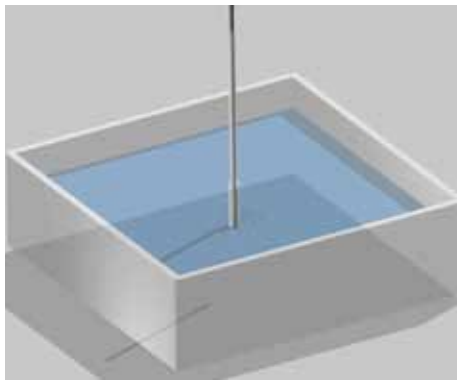
BR2-N Series

NEW! / 全新!

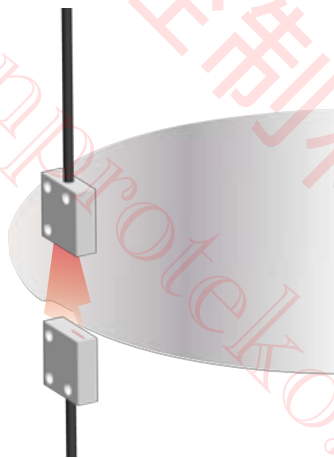
Fiber Amplifier
光纖放大器

◆ Application / 應用例 :

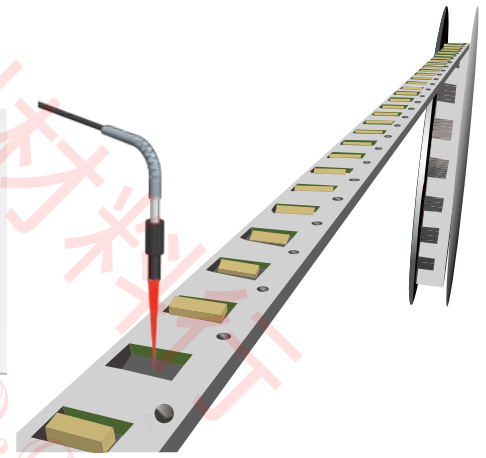
Detecting the level of liquid.
/ 檢測水位



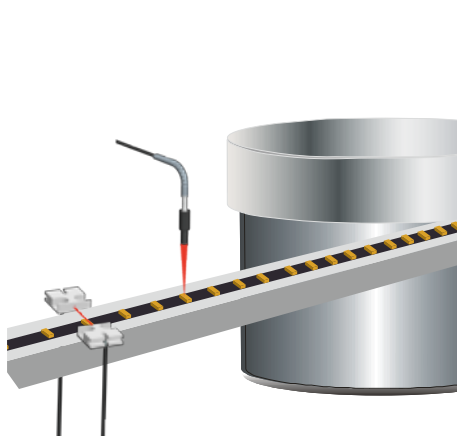
Detecting if the wafer is broken.
/ 檢測晶片缺口



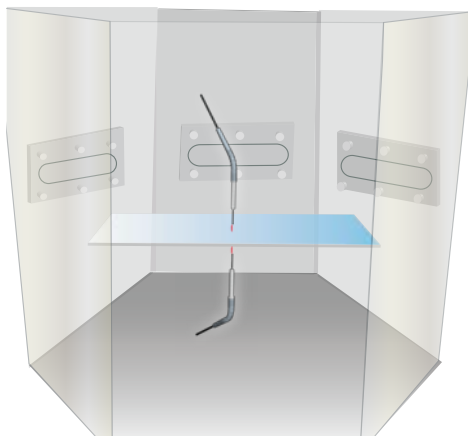
Detecting the objects on the conveyer.
/ 檢測料帶上的物件有無



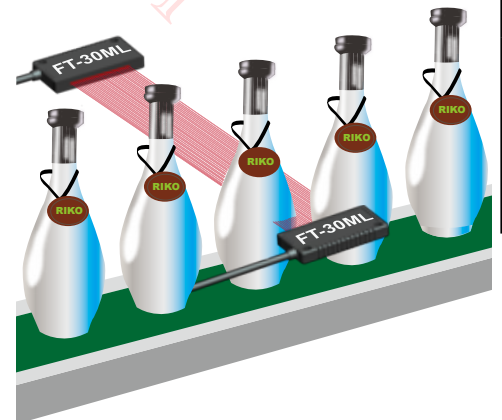
Detecting if the right side of the objects on the feeder.
/ 檢測送料機上物品的正反



Detecting a glass in a vacuum room.
/ 在真空室檢測玻璃



Measuring the quantity of bottles.
/ 檢測瓶子數量



Fiber
Photo Sensor
Area Sensor
Ultrasonic Sensors
Inductive Proximity Sensor
Capacitive Proximity Sensor
Timer / Counter
Others
Accessories

BR2

Digital Fiber Amplifier

◆Characteristic / 特點：

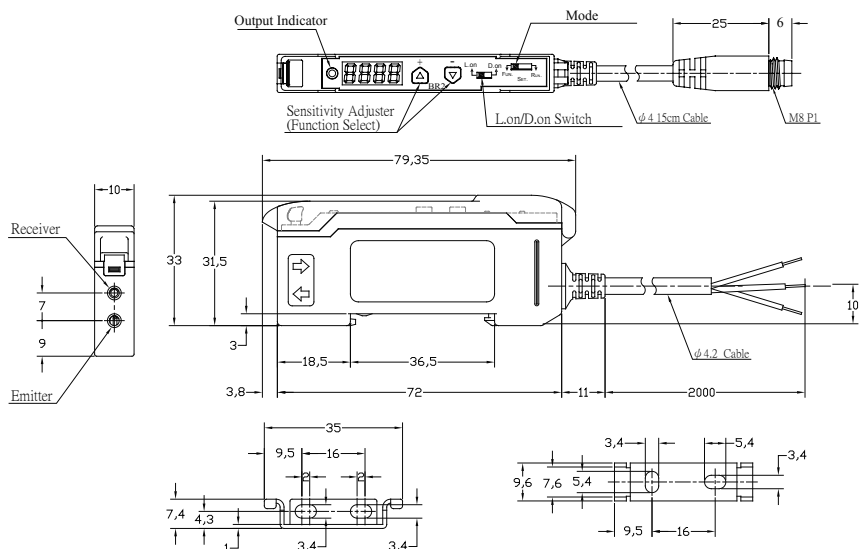
- Easy to install. / 設定方便，容易上手。
- Numeric displays, interactive prompts./單顯數字型面板，且運算快。
- Applications focus on many industries, such as semiconductor assembly, handling technology and packing. / 此產品可應用在許多產業中，包含半導體、裝卸作業和包裝產業等。
- Depends on the mounting direction, the digital display of BR2 can be inverted. /BR2的單顯數字面板，可依您裝上的方向，而作反轉調整。



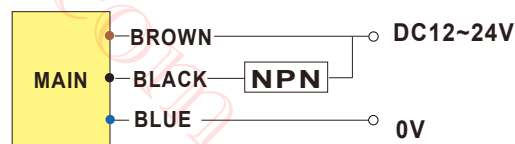
◆Specifications / 規格表：

Model / 型號	Pre-wired ϕ 4.2	BR2-N	BR2-P
	M8 pigtailed type	BR2-NB	BR2-PB
Emitting light / 發光源	Red LED 660nm		
Operating voltage / 工作電壓	DC12 to 24 \pm 10%		
Current Consumption / 消耗電流	45mA Max.		
Load current / 負載電流	100mA Max at DC 24V		
Output type / 輸出模式	NPN L.on / D.on		PNP L.on / D.on
Protection circuit / 保護電路	Reversed polarity protection, over-current protection		
Response time / 反應時間	on 1 ms, off 1ms		
Indicators / 指示燈	Output indicator : Red LED		
Sensitivity adjustment/靈敏度功能	3 Digtals 000-999		
Insulation resistance / 隔離阻抗	20M Ω min. (DC500V)		
Voltage withstandabiligy / 絕緣耐壓	AC500V 60Hz for 60 Sec.		
Operating temperature/工作溫度	- 10 $^{\circ}$ C ~ + 60 $^{\circ}$ C		
Ambient humidity / 工作溼度	35% ~ 85% RH		
Protection degree / 防水等級	IP64		
Material / 外觀材質	ABS		
Wiring method / 出線方式	BR2-□	Pre-wired ϕ 4.2 x 2M / 3-wires	
	BR2-□D	M8 pigtailed type / M8 接頭15cm電線式	
Weight / 重量	BR2-□	Approx.63 g	
	BR2-□D	Approx.70 g	

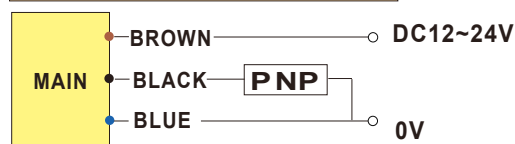
◆Dimensions/尺寸圖：



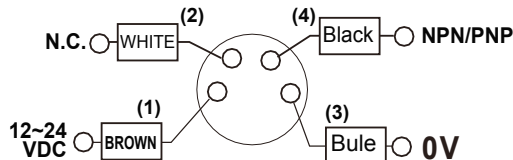
BR2-N□ Wiring diagram



BR2-P□ Wiring diagram



BR2-□B



Digital Fiber Amplifier

BR2

◆ Manual / 使用說明:

Output Indicator/輸出指示燈

Mode Switch/功能選擇鍵



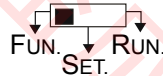
Sensitivity Adjuster (Function Select)
/敏感度調整

L.on/D.on Switch
L.on/D.on選擇鍵

功能配置：可設定所有的功能

如果在設定的時候，您可以利用簡單的選項來使用所有的功能

Please select FUN./
選擇到FUN.模式



Mode Switch/
模式選擇鍵

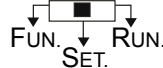


Function Switch/
功能設定鍵



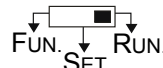
Mode Switch/模式選擇鍵	設定選項
signal pulse/ 感測距離	standard/ 標準距離 long pulse/ 加長距離
power output/ 輸出功率調整	50% power/ 一半功率 standard/ 標準功率
power saving/ 面板亮度調整	100% lightness/ 全亮 50% lightness/ 半亮 25% lightness/ 1/4亮
delay/ 時間延遲設定	no delay/ 無延遲 on delay/ 開啓延遲 off delay/ 關閉延遲
	on one shot/ 上微分觸發 off one shot/ 下微分觸發
delay time/ 延遲秒數設定	2ms 20ms 50ms 100ms
	500ms 1s 5s 10s
inverted display/ 面板正、反向調整	obverse/ 視窗正向 reverse/ 視窗反向

Please select SET./
選擇到SET.模式



Please select to adjust sensing distance./
選擇上下調整鍵 設定感應數值

Please select RUN./
選擇到RUN.模式



Operating mode/
開始工作模式

Example: To make BR2 on-delay 5 s, when it is in operating situation. / 範例: 設定時間通電延遲5秒

Step1/步驟一: Please select FUN./ 選擇到 FUN. 模式 	Step2/步驟二: Minus Button/ 模式選擇鍵 delay/ 時間延遲設定	Step3/步驟三: Plus Button/ 功能設定鍵 on delay/ 開啓延遲	Step4/步驟四: Minus Button/ 模式選擇鍵 delay time/ 延遲秒數設定	Step5/步驟五: Plus Button/ 功能設定鍵 5s /5秒
---	---	---	--	--

RiKO

Fiber

Photo Sensor

Area Sensor

Ultrasonic Sensors

Inductive Proximity Sensor

Capacitive Proximity Sensor

Timer / Counter

Others

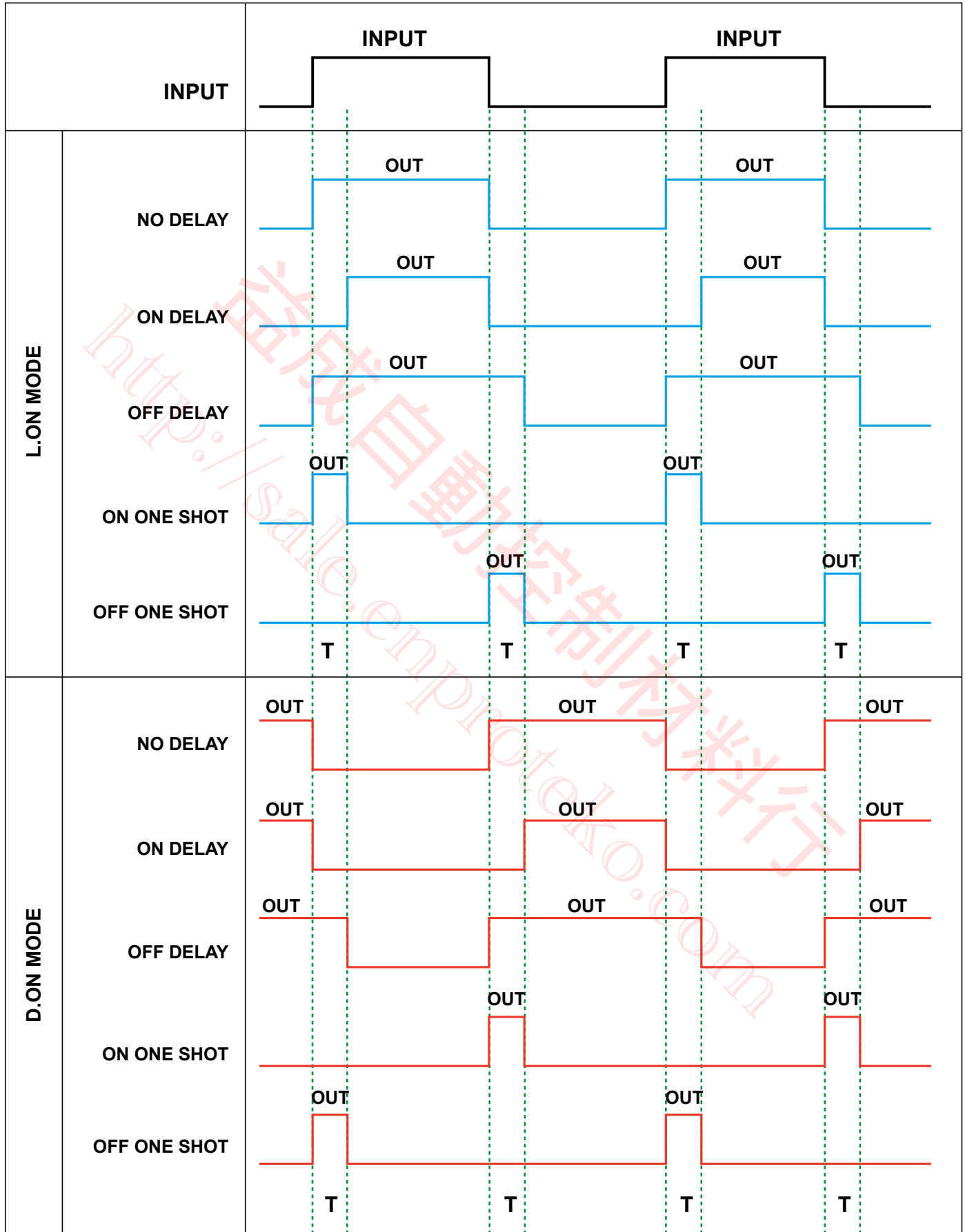
Accessories

BR2

Digital Fiber Amplifier

◆ Operation timing chart / 時序圖 :

- Fiber
- Photo Sensor
- Area Sensor
- Ultrasonic Sensors
- Inductive Proximity Sensor
- Capacitive Proximity Sensor
- Timer / Counter
- Others
- Accessories



燈號與輸出同步

DELAY TIME : 2ms ; 20ms ; 50ms ; 100ms ; 500ms

DELAY TIME : 1S ; 5S ; 10S

Digital Fiber Amplifier

BR2

◆ Side mounting of amplifier / 放大器固定之組裝 :

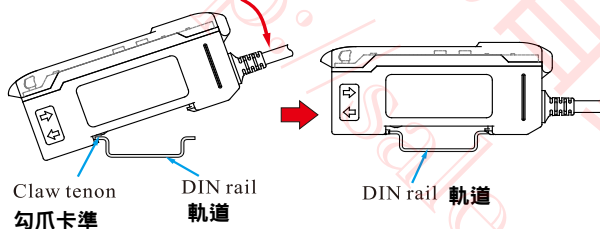
* Attached mounting bracket. Fixing it up by 2pcs M3 screws. The torque must be 0.8Nm or less. /內附托架，並使用M3螺絲穿過固定孔旋緊，但扭力不可超過0.8Nm。



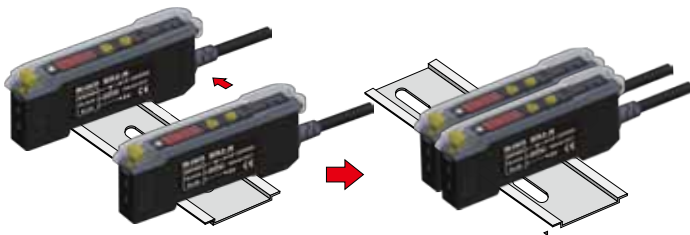
◆ Fiber amplifier mounting/detaching operation / 光纖放大器安裝方式:

1. Mounting / 安裝

(1) To mount each amplifier to the attached mounting bracket or DIN rail in sequence. /將每一台依序裝至軌道上。



(2) To connect two amplifiers close together by sliding the amplifier bodies. /滑動本體，依序將放大器密和即可。



2. Detaching / 卸下

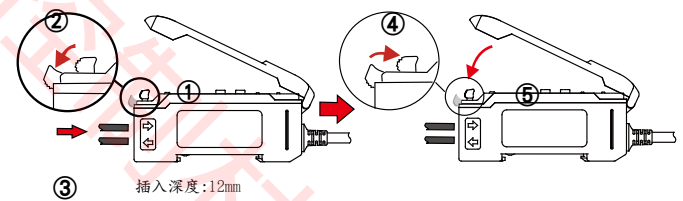
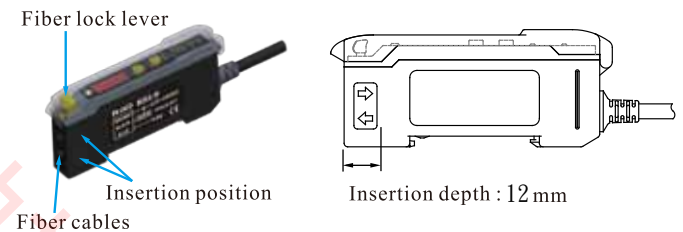
To detach the amplifiers in sequence by sliding the amplifier bodies. Don't detach two amplifiers at a time. /滑動本體，依序將各台卸下。

Be sure to switch off the power supply when mounting or detaching the amplifier. /當您要安裝或卸下光纖放大器時，請先確認電源已關閉。

◆ Fiber cables fixing operation :

1. Insert the fiber cables / 插入光纖

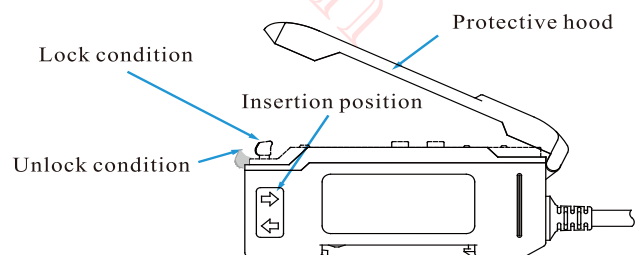
Open the protective hood and tilt the fiber lock lever to release the lock condition. Referring to the side seal of insertion position, fully insert the fiber cables into the mounting holes until the limit. Pull the fiber lock lever back to lock the cables. /開啟保護蓋並先壓下光纖固定桿，以解除鎖定狀態，依照光纖放大器側面插入位置記號插入光纖，再將光纖固定桿扳起鎖定。



- ① Open the protective hood. / 掀開保護透明蓋。
- ② Tilt the fiber lock lever to release the lock condition. / 解除鎖定狀態。
- ③ Insert the fiber cables. / 插入光纖。
- ④ Pull the fiber lock lever back to lock the cables. / 鎖定狀態。
- ⑤ Close the protective hood. / 蓋起保護透明蓋。

2. Pull out the fiber cables / 拔出光纖

Open the protective hood and tilt the fiber lock lever to release the lock condition. Pull the fiber cables straight out from the mounting holes. /開啟保護蓋並光纖固定桿，以解除鎖定狀態，即可拔出光纖。



To protect the fiber cables from incorrect operation, be sure to tilt the fiber lock lever to release the lock condition before pulling out the fiber cables. /為了維護光纖，請在更換時，確定光纖固定桿為解除鎖定後，再將光纖拔出。

Fiber

Photo Sensor

Area Sensor

Ultrasonic Sensors

Inductive Proximity Sensor

Capacitive Proximity Sensor

Timer / Counter

Others

Accessories